

NDB RWY 30

WINONA MUNI-MAX CONRAD FLD (ONA)

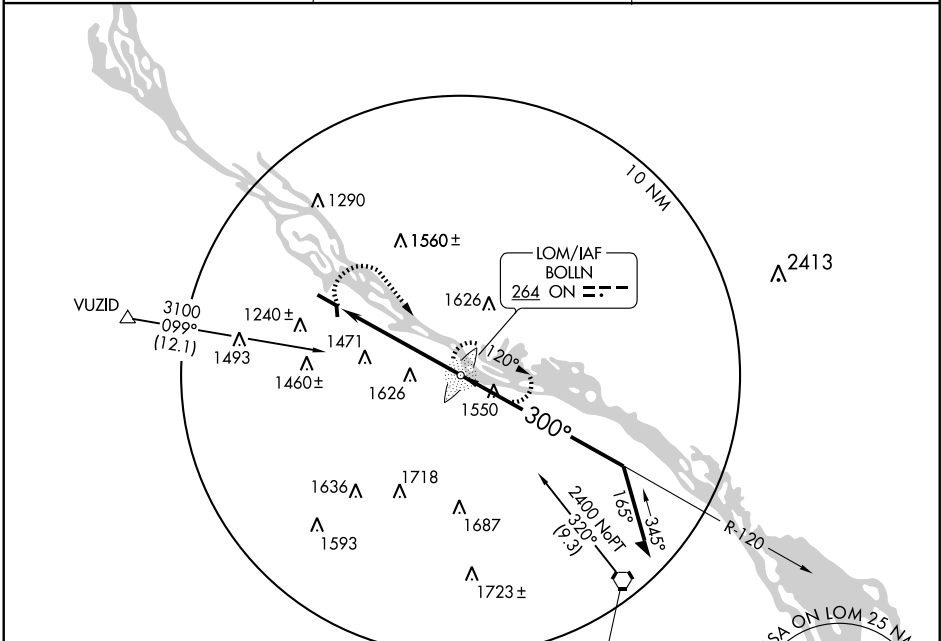
LOM ON 264	APP CRS 300°	Rwy Idg 5199
		TDZE 656
		Apt Elev 656

NA Inoperative table does not apply to Cat A. When local altimeter setting not received, use La Crosse altimeter setting and increase all MDA 60 feet.

MALSR **45**

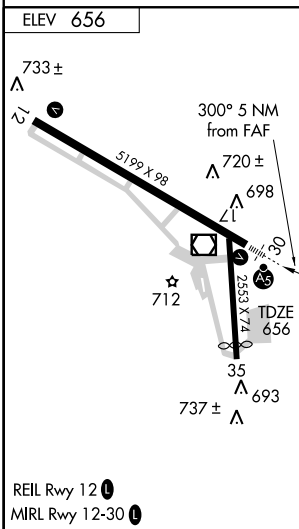
MISSED APPROACH: Climbing right turn to 2700 direct BOLLN LOM and hold.

AWOS-3 111.4	MINNEAPOLIS CENTER 128.6 363.0	UNICOM 122.8 (CTAF) 0
------------------------	--	---------------------------------



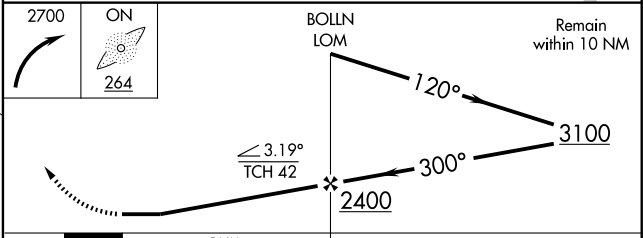
NC-1, 22 OCT 2009 to 19 NOV 2009

NC-1, 22 OCT 2009 to 19 NOV 2009



IF/IAF NODINE 117.9 ODI Chan 126

Procedure NA for arrivals at ODI VORTAC via airway radials 260 CW 359.



CATEGORY	A	B	C	D
S-30	1980-1¼ 1324 (1400-1¼)		1980-2½ 1324 (1400-2½)	1980-2¾ 1324 (1400-2¾)
CIRCLING	1980-1¼ 1324 (1400-1¼)	1980-1½ 1324 (1400-1½)	1980-3	1324 (1400-3)