

RNAV (GPS) Z RWY 27

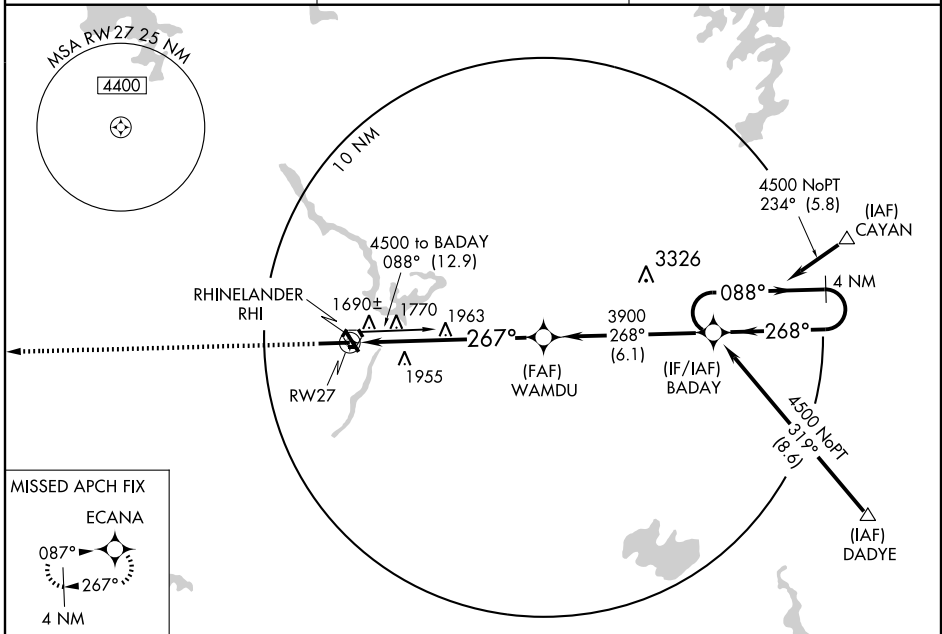
RHINELANDER-ONEIDA COUNTY (R.HI)

APP CRS	Rwy Idg	6799
267°	TDZE	1606
	Apt Elev	1623

⚠ GPS or RNP-0.3 Required. DME/DME RNP-0.3 NA.
⚠ Baro/VNAV NA below -18° C (0° F).
⚠ Circling NA at night to Rwy 15.

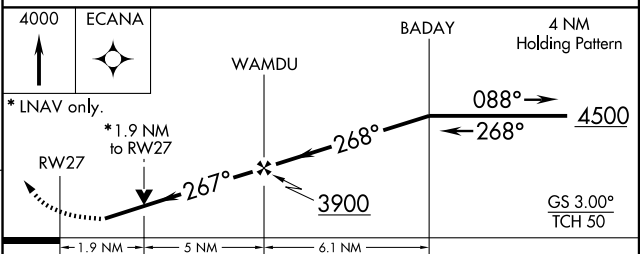
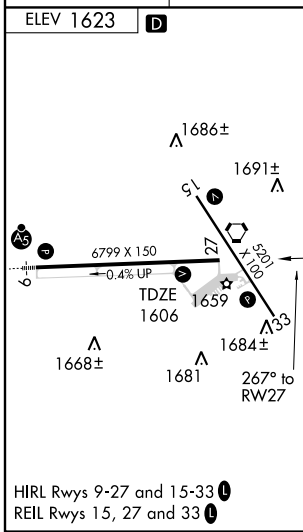
MISSED APPROACH: Climb to 4000 direct ECANA WP and hold.

ASOS 126.825	MINNEAPOLIS CENTER 133.65 281.5	UNICOM 123.0 (CTAF) 0
------------------------	---	---------------------------------



EC-3, 22 OCT 2009 to 19 NOV 2009

EC-3, 22 OCT 2009 to 19 NOV 2009



CATEGORY	A	B	C	D
GLS DA	NA			
LNAV/VNAV DA	1980-1¼ 374 (400-1¼)			
LNAV MDA	2260-1 654 (700-1)	2260-1¾ 654 (700-1¾)	2260-2 654 (700-2)	
CIRCLING	2260-1¼ 637 (700-1¼)	2260-1¾ 637 (700-1¾)	2280-2 657 (700-2)	