

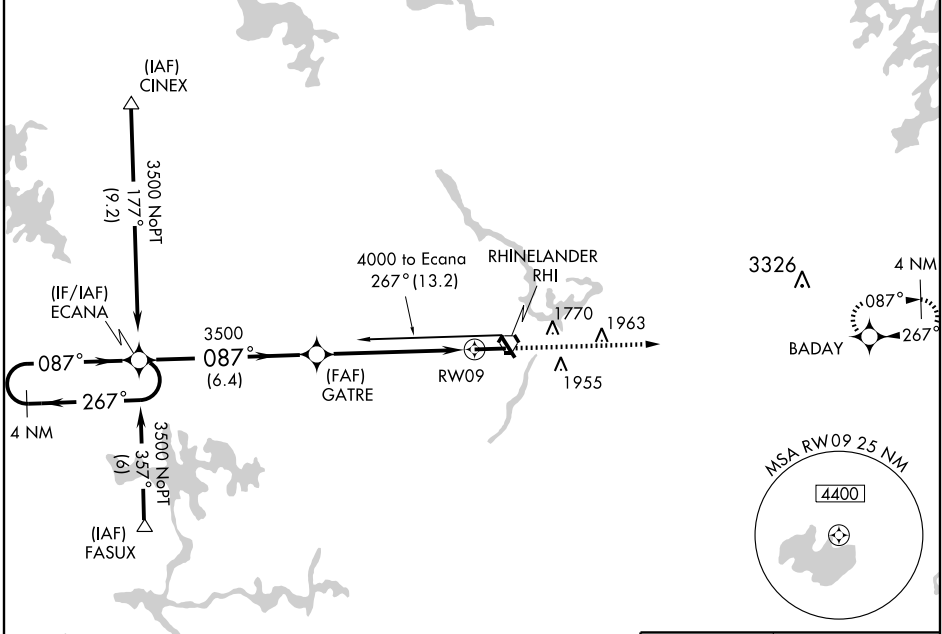
**RNAV (GPS) RWY 9**  
RHINELANDER-ONEIDA COUNTY (RHI)

APP CRS	Rwy Idg	<b>6799</b>
<b>087°</b>	TDZE	<b>1623</b>
	Apt Elev	<b>1623</b>

**▼** For inoperative MALSR increase LNAV/VNAV Cat. D visibility to 1 mile.  
**▲ NA** Circling NA at night to Rwy 15. Baro/VNAV NA below -18° C (0° F).  
 GPS or RNP-0.3 Required. DME/DME RNP-0.3 NA.  
 Inoperative table does not apply to LNAV Cat. D.

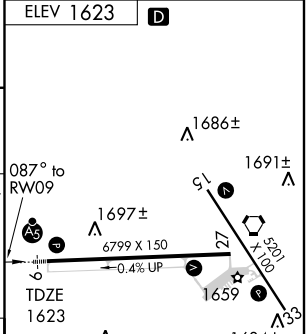
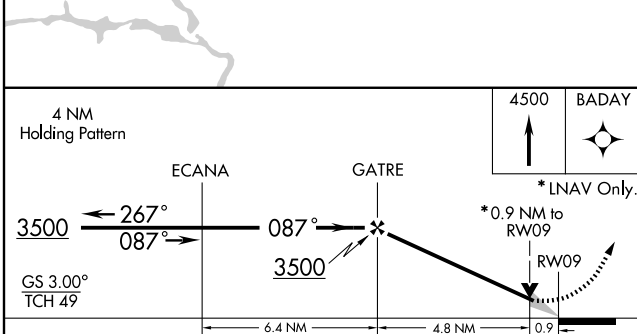
**MALSR**    
**MISSED APPROACH:** Climb to 4500 direct BADAY WP and hold.

ASOS <b>126.825</b>	MINNEAPOLIS CENTER <b>133.65 281.5</b>	UNICOM <b>123.0 (CTAF) 0</b>
------------------------	---	---------------------------------



EC-3, 22 OCT 2009 to 19 NOV 2009

EC-3, 22 OCT 2009 to 19 NOV 2009



CATEGORY	A	B	C	D
GLS DA	NA			
LNAV/VNAV DA	1940-1/2	317 (400-1/2)		1940-3/4 317 (400-3/4)
LNAV MDA	1960-1/2	337 (400-1/2)		1960-1 337 (400-1)
CIRCLING	2020-1 397 (400-1)	2220-1 597 (600-1)	2220-1 1/2 597 (600-1 1/2)	2280-2 657 (700-2)

HIRL Rwy 9-27 and 15-33 **0**  
 REIL Rwy 15, 27 and 33 **0**