

RNAV (GPS) RWY 15

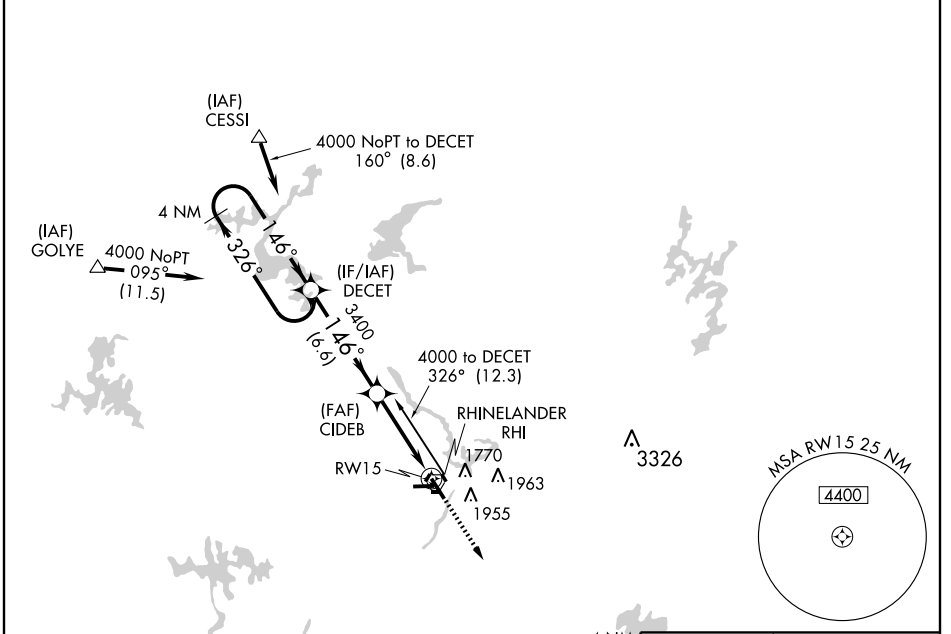
RHINELANDER-ONEIDA COUNTY (RHI)

APP CRS	Rwy Idg	5201
146°	TDZE	1599
	Apt Elev	1623

▼ When VGSI inoperative, straight-in/circling Rwy 15 NA at night.
▲ NA GPS or RNP-0.3 Required.
 DME/DME RNP-0.3 NA.

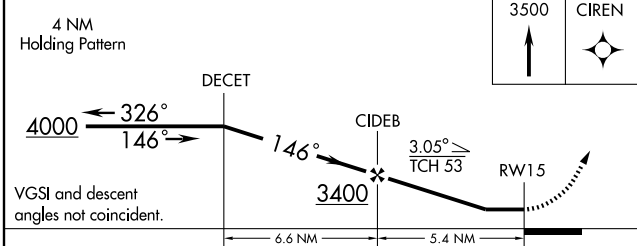
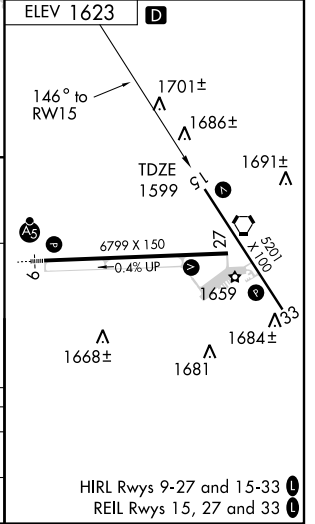
MISSED APPROACH: Climb to 3500 direct CIREN WP and hold.

ASOS 126.825	MINNEAPOLIS CENTER 133.65 281.5	UNICOM 123.0 (CTAF) 0
------------------------	---	---------------------------------



EC-3, 22 OCT 2009 to 19 NOV 2009

EC-3, 22 OCT 2009 to 19 NOV 2009



CATEGORY	A	B	C	D
LNVA MDA	1980-1 381 (400-1)			1980-1¼ 381 (400-1¼)
CIRCLING	2020-1 397 (400-1)	2220-1 597 (600-1)	2220-1½ 597 (600-1½)	2280-2 657 (700-2)

HIRL Rwy 9-27 and 15-33
 REIL Rwy 15, 27 and 33