

DUBLIN, VIRGINIA

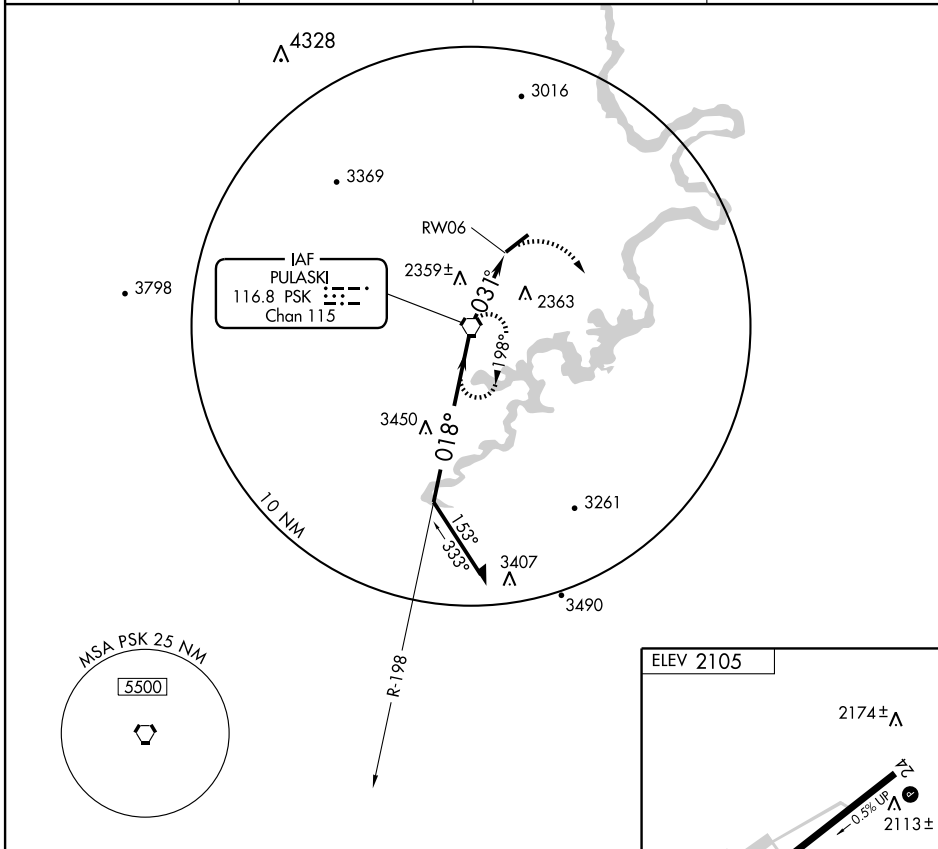
AL-5084 (FAA)

VORTAC PSK <b>116.8</b> Chan 115	APP CRS <b>031°</b>	Rwy Idg TDZE Apt Elev	<b>6201</b> N/A <b>2105</b>
--	------------------------	-----------------------------	-----------------------------------

# VOR or GPS-A

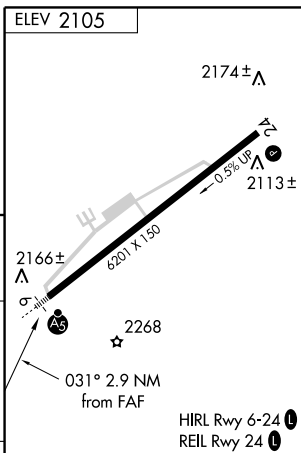
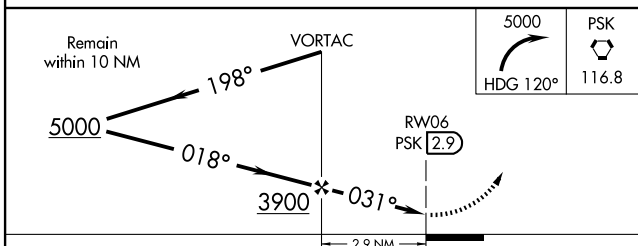
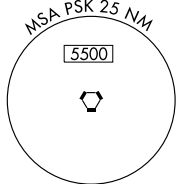
DUBLIN/ NEW RIVER VALLEY (PSK)

			MISSED APPROACH: Climbing right turn to 5000 via heading 120° then direct PSK VORTAC and hold.
AWOS-3 <b>127.375</b>	ROANOKE APP CON <b>126.0 339.8</b>	ROANOKE CLNC DEL <b>121.7</b>	UNICOM <b>122.7 (CTAF)</b>



NE-3, 22 OCT 2009 to 19 NOV 2009

NE-3, 22 OCT 2009 to 19 NOV 2009



CATEGORY	A	B	C	D	FAF to MAP 2.9 NM					
CIRCLING	2740-1	635 (700-1)	2740-1¾ 635 (700-1¾)	2740-2¼ 635 (700-2¼)	Knots	60	90	120	150	180
					Min:Sec	2:54	1:56	1:27	1:10	0:58

DUBLIN, VIRGINIA  
Amdt 8 07074

37°08'N - 80°41'W

# DUBLIN/ NEW RIVER VALLEY (PSK)

## VOR or GPS-A