

DUBLIN, VIRGINIA

AL-5084 (FAA)

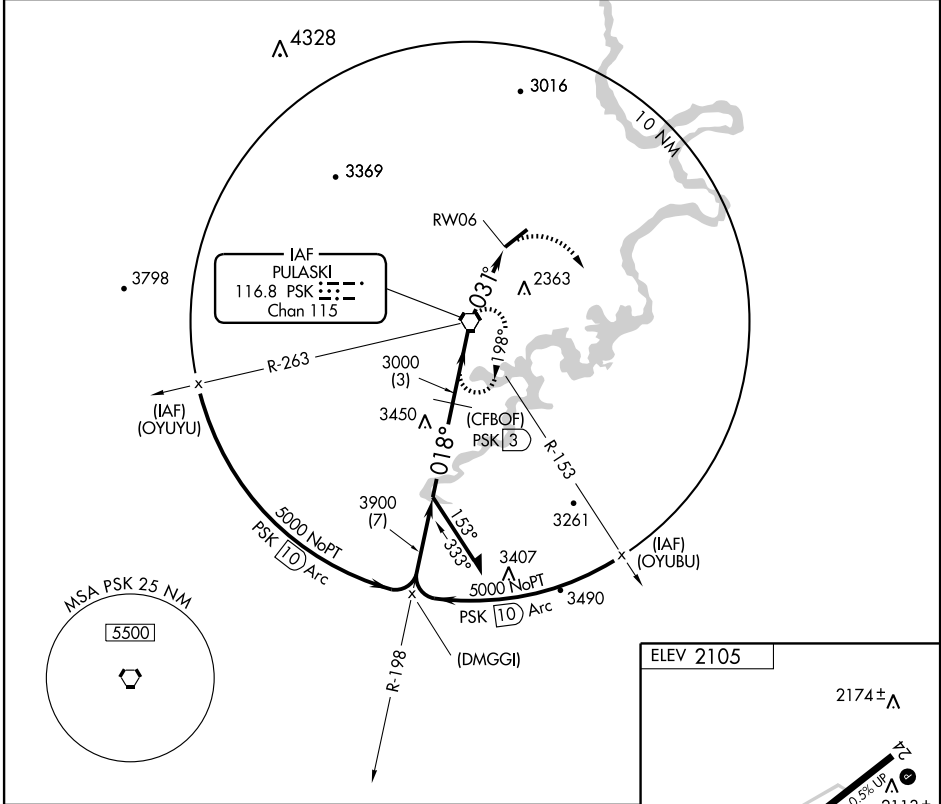
VOR/DME or GPS RWY 6

DUBLIN/ NEW RIVER VALLEY (PSK)

VORTAC PSK 116.8 Chan 115	APP CRS 031°	Rwy Idg TDZE Apt Elev	6201 2105 2105
---	------------------------	-----------------------------	---

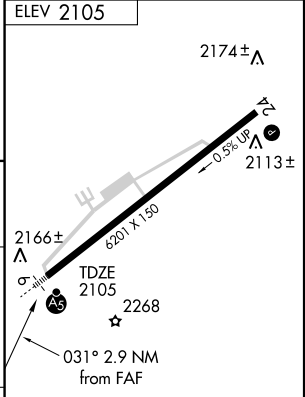
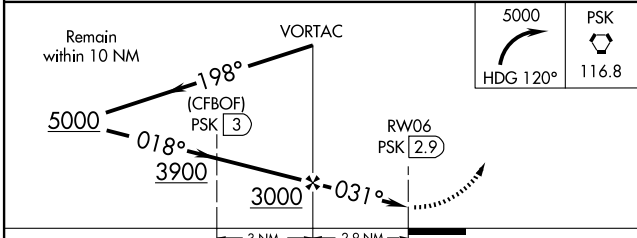
Inoperative table does not apply.	MALSR	MISSED APPROACH: Climbing right turn to 5000 via heading 120° then direct PSK VORTAC and hold.
		VORTAC

AWOS-3 127.375	ROANOKE APP CON 126.0 339.8	ROANOKE CLNC DEL 121.7	UNICOM 122.7 (CTAF)
--------------------------	---------------------------------------	----------------------------------	-------------------------------



NE-3, 22 OCT 2009 to 19 NOV 2009

NE-3, 22 OCT 2009 to 19 NOV 2009



CATEGORY	A	B	C	D
S-6	2620-1 515 (600-1)		2620-1½ 515 (600-1½)	2620-1¾ 515 (600-1¾)
CIRCLING	2620-1 515 (600-1)		2620-1½ 515 (600-1½)	2680-2 575 (600-2)

HIRL Rwy 6-24	
REIL Rwy 24	
Knots	60 90 120 150 180
Min:Sec	

DUBLIN, VIRGINIA
Amdt 7 07074

37°08'N - 80°41'W

DUBLIN/ NEW RIVER VALLEY (PSK)

VOR/DME or GPS RWY 6