

# RNAV (GPS) RWY 24

DUBLIN/ NEW RIVER VALLEY (PSK)

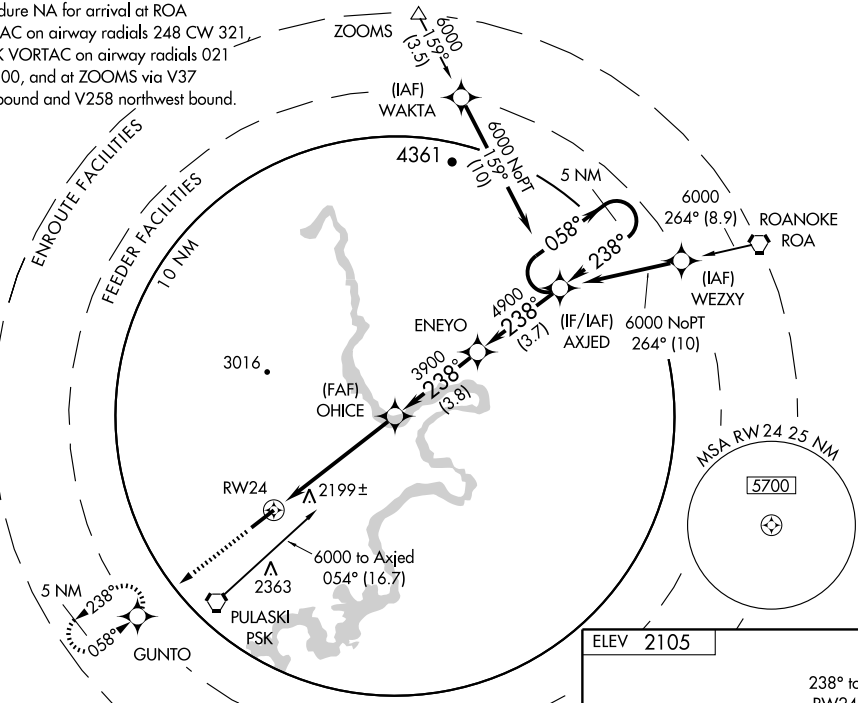
WAAS Chan <b>86227</b> <b>W24A</b>	APP CRS <b>238°</b>	Rwy Idg TDZE Apt Elev	<b>6201</b> <b>2087</b> <b>2105</b>
--	------------------------	-----------------------------	---

**NA** DME/DME RNP-0.3 NA. Baro-VNAV NA below -15°C (5°F). VDP and Baro-VNAV NA when using Virginia Tech/Montgomery Executive altimeter setting. If local altimeter setting not received, use Virginia Tech/Montgomery Executive altimeter setting and increase all DAs/MDAs 40 feet.

MISSED APPROACH: Climb to 5000 direct GUNTO and hold.

AWOS-3 <b>127.375</b>	ROANOKE APP CON <b>126.0 339.8</b>	ROANOKE CLNC DEL <b>121.7</b>	UNICOM <b>122.7 (CTAF)</b>
--------------------------	---------------------------------------	----------------------------------	-------------------------------

Procedure NA for arrival at ROA  
VORTAC on airway radials 248 CW 321,  
at PSK VORTAC on airway radials 021  
CW 100, and at ZOOMS via V37  
northbound and V258 northwest bound.



NE-3, 22 OCT 2009 to 19 NOV 2009

NE-3, 22 OCT 2009 to 19 NOV 2009

5000	GUNTO	AXJED	5 NM Holding Pattern
↑	◆	ENEYO	
	*1.1 NM to RW24	OHICE	058° → 6000
	*LNAV only	ENEYO	← 238°
	1.1	4.4 NM	3.8 NM
		3.7 NM	
CATEGORY	A	B	C
LPV DA		2337-1	250 (300-1)
LNAV/VNAV DA		2346-1	259 (300-1)
LNAV MDA		2460-1	373 (400-1)
			2460-1¼
			373 (400-1¼)
CIRCLING	2620-1	515 (600-1)	2660-1½
			555 (600-1½)
			2680-2
			575 (600-2)

