

RNAV (GPS) RWY 15

LAKE CHARLES RGNL (LCH)

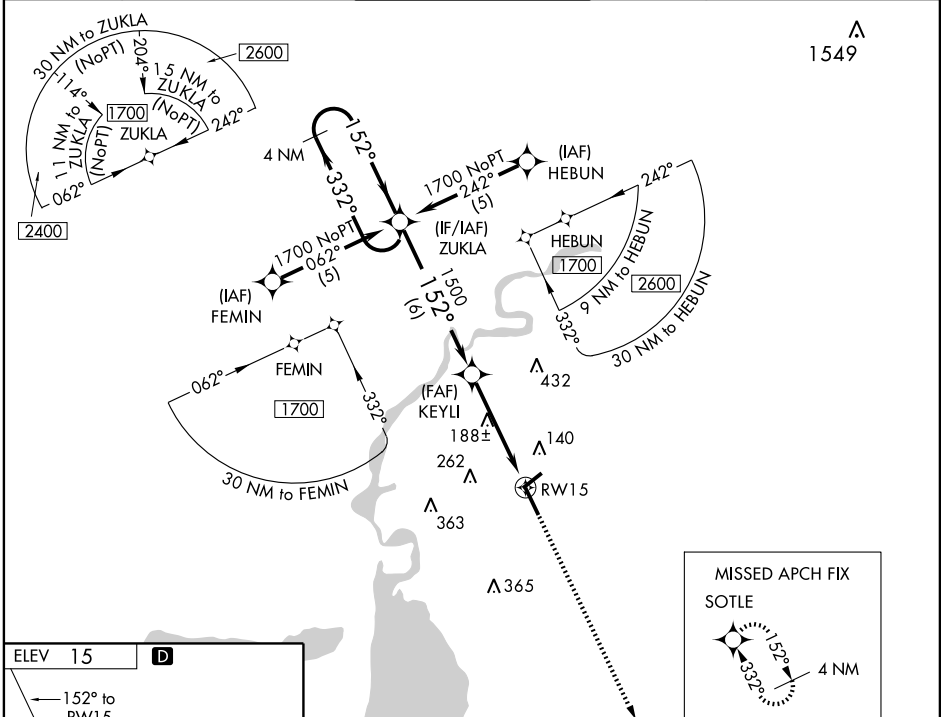
APP CRS 152°	Rwy Idg 6500
	TDZE 12
	Apt Elev 15

NA	BARO VNAV NA below -15°C (5°F). GPS or RNP-0.3 Required.
ASR	DME/DME RNP-0.3 NA.



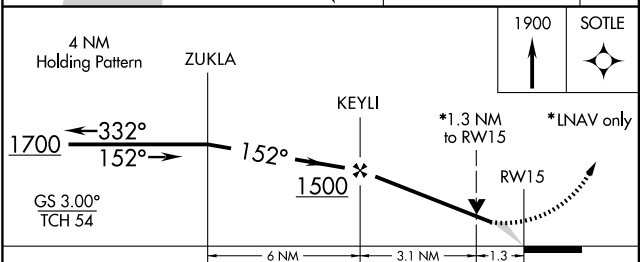
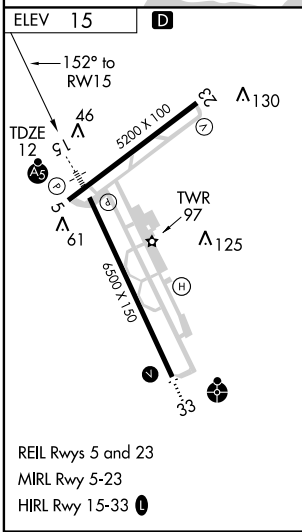
MISSED APPROACH: Climb to 1900 direct SOTLE WP and hold.

ATIS 118.75	LAKE CHARLES APP CON* 119.35 353.75	LAKE CHARLES TOWER* 120.7 (CTAF) 257.8	GND CON 121.8	CLNC DEL 126.25	UNICOM 122.95
-----------------------	---	---	-------------------------	---------------------------	-------------------------



SC-4, 22 OCT 2009 to 19 NOV 2009

SC-4, 22 OCT 2009 to 19 NOV 2009



CATEGORY	A	B	C	D
GLS PA DA	NA			
LNAV/VNAV DA	340/24 328 (400-½)			340/40 328 (400-¾)
LNAV	440/24	428 (500-½)	440/40 428 (500-¾)	440/50 428 (500-1)
CIRCLING	440-1 425 (500-1)	480-1 465 (500-1)	480-1½ 465 (500-1½)	580-2 565 (600-2)