

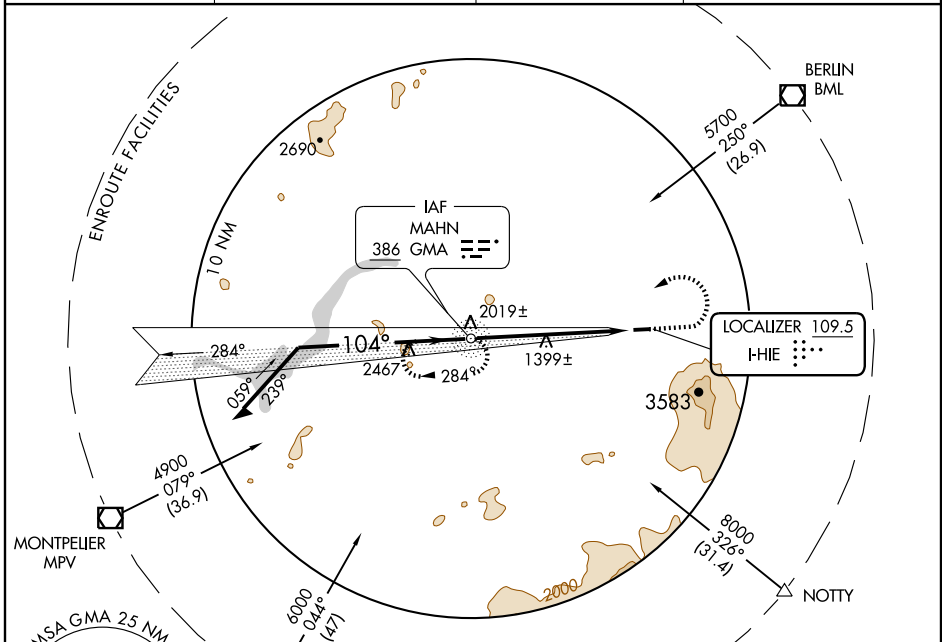
LOC I-HIE 109.5	APP CRS 104°	Rwy Idg TDZE Apt Elev	4001 1057 1074
---------------------------	------------------------	-----------------------------	---

LOC/NDB RWY 10

WHITEFIELD/MOUNT WASHINGTON RGNL (HIE)

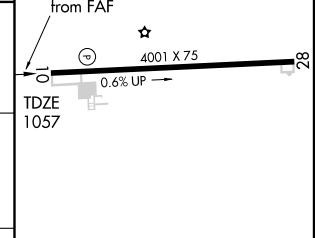
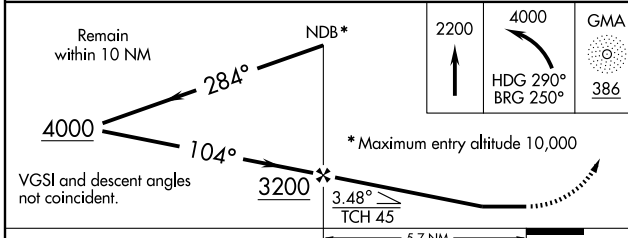
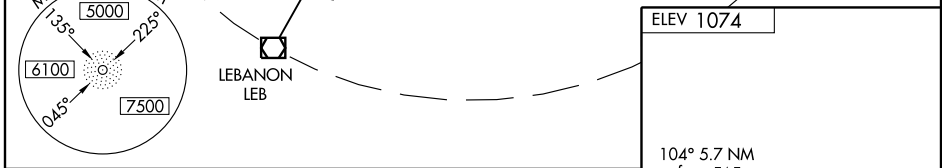
<p>Circling NA south of Rwy 10-28.</p>	<p>MISSED APPROACH: Climb to 2200 then climbing left turn to 4000 via heading 290° and bearing 250° to GMA NDB and hold.</p>
--	--

ASOS 118.525	BOSTON CENTER 135.7 282.2	CLNC DEL 122.4	UNICOM 122.8 (CTAF)
------------------------	-------------------------------------	--------------------------	-------------------------------



NE-1, 22 OCT 2009 to 19 NOV 2009

NE-1, 22 OCT 2009 to 19 NOV 2009



CATEGORY	A	B	C	D
S-10	1740-1	683 (700-1)	1740-2 683 (700-2)	NA
CIRCLING	1740-1	666 (700-1)	1740-2 666 (700-2)	NA

REIL Rwy 28

MIRL Rwy 10-28

FAF to MAP 5.7 NM

Knots	60	90	120	150	180
Min:Sec	5:42	3:48	2:51	2:17	1:54

LOC/NDB RWY 10