

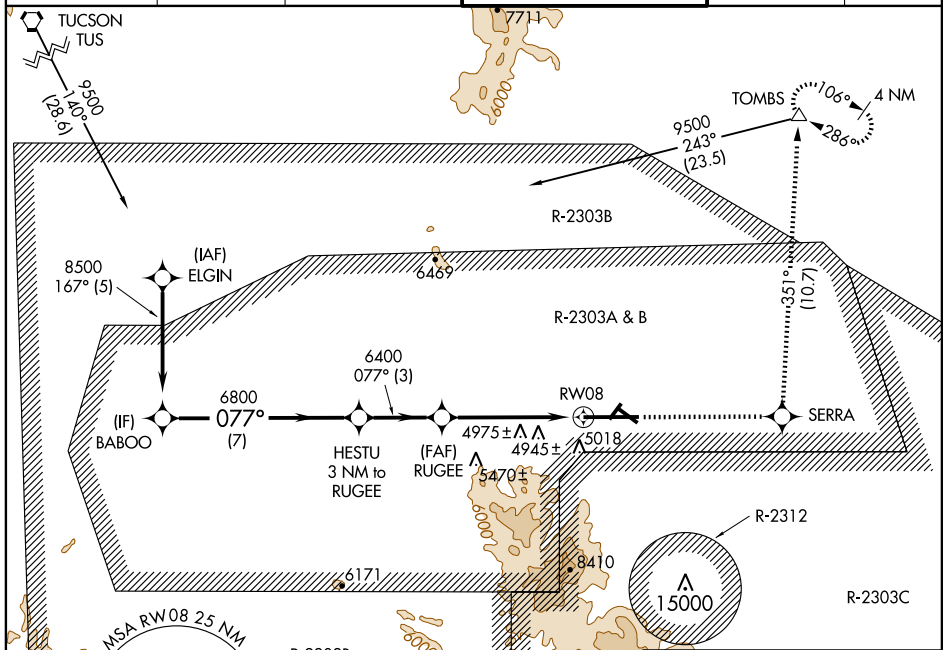
APP CRS	Rwy Idg	12001
077°	TDZE	4719
	Apt Elev	4719

RNAV (GPS) RWY 8

FORT HUACHUCA-SIERRA VISTA/ SIERRA VISTA MUNI-LIBBY AAF (FHU)

 DME/DME RNP-0.3 NA. Circling not authorized south of runways 8 and 30. ASR/PAR	MISSED APPROACH: Climb to 9500 direct SERRA and via 351° track to TOMBS and hold.	
--	---	--

ATIS 134.75 265.7	ASOS 119.675	LIBBY AAF GCA* 127.05 254.35	LIBBY TOWER* 124.95 (CTAF) 284.75	GND CON 121.7 268.7	UNICOM 122.95
-----------------------------	------------------------	--	---	-------------------------------	-------------------------



MSA RW08 25 NM	ELEV 4719
----------------	-----------



Procedure Turn NA	BABOO 8500 077°	HESTU 3 NM to RUGEE 6800 077°	RUGEE 6400 3.05° TCH 50	RW08 5018	SERRA 4719	TOMBS 9500	TDZE 4719 4285 X 75 12001 X 150 1.0% DOWN 2.0% UP 1.0% UP 1.0% UP
	7 NM	3 NM	5 NM				

CATEGORY	A	B	C	D
RNAV MDA	5920-1¼ 1201 (1300-1¼)	5920-1½ 1201 (1300-1½)	5920-3 1201 (1300-3)	1201 (1300-3)
CIRCLING	5920-1¼ 1201 (1300-1¼)	5920-1½ 1201 (1300-1½)	5920-3 1201 (1300-3)	1201 (1300-3)

HIRL Rwy 8-26
MIRL Rwy 3-21 and 12-30

RNAV (GPS) RWY 8

SW-4, 22 OCT 2009 to 19 NOV 2009

SW-4, 22 OCT 2009 to 19 NOV 2009