

VOR/DME SBJ	APP CRS	Rwy Idg	2200
112.9	061°	TDZE	105
Chan 76		Apt Elev	105

VOR or GPS RWY 8

SOMERVILLE / SOMERSET (SMQ)

▼ Obtain local altimeter setting on CTAF; when not received, use Newark altimeter setting minimums. Straight-in minimums not authorized at night. Circling minimums not authorized at night except by prior arrangement for runway lights.

MISSED APPROACH: Climbing left turn to 2000 direct SBJ VOR/DME and hold.

ASOS
120.6

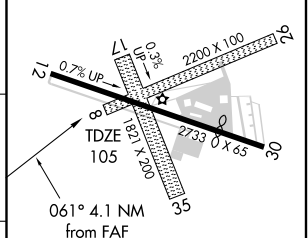
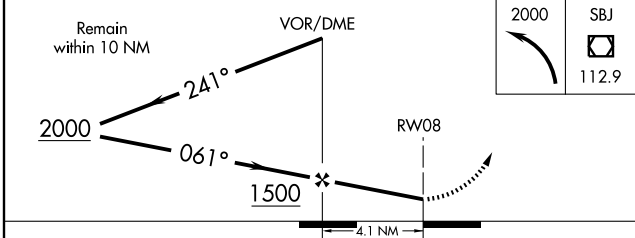
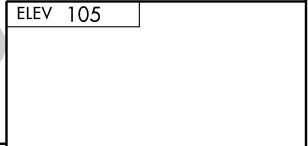
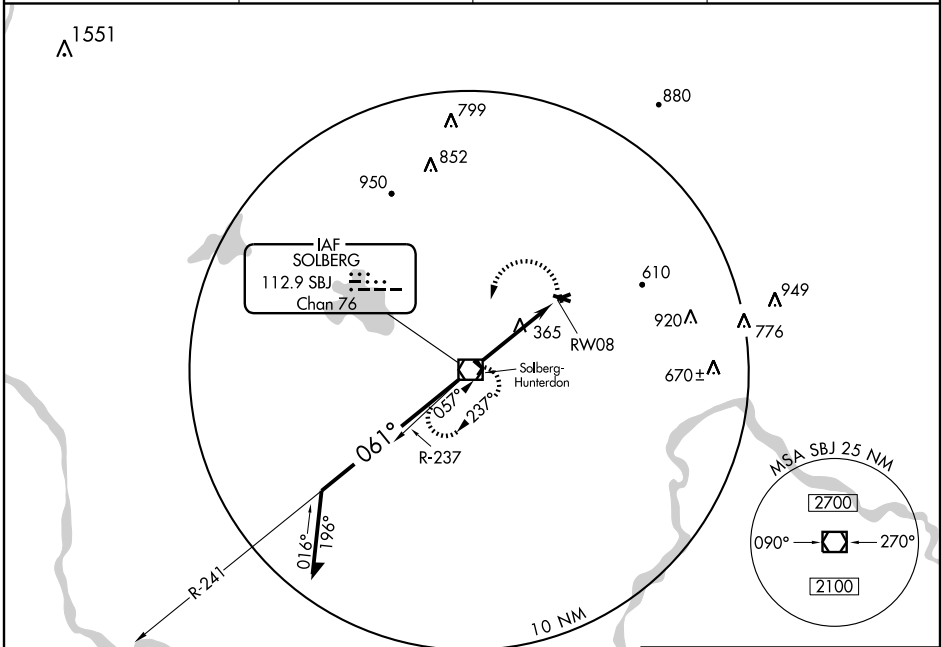
NEW YORK APP CON
132.8 379.9

GCO
121.725

UNICOM
123.0 (CTAF)

NE-2, 22 OCT 2009 to 19 NOV 2009

NE-2, 22 OCT 2009 to 19 NOV 2009



CATEGORY	A	B	C	D
S-8	680-1	575 (600-1)		NA
CIRCLING	680-1	575 (600-1)		NA
NEWARK ALTIMETER SETTING MINIMUMS				
S-8	740-1	635 (700-1)		NA
CIRCLING	740-1	635 (700-1)		NA

FAF to MAP 4.1 NM					
Knots	60	90	120	150	180
Min:Sec	4:06	2:44	2:03	1:38	1:22