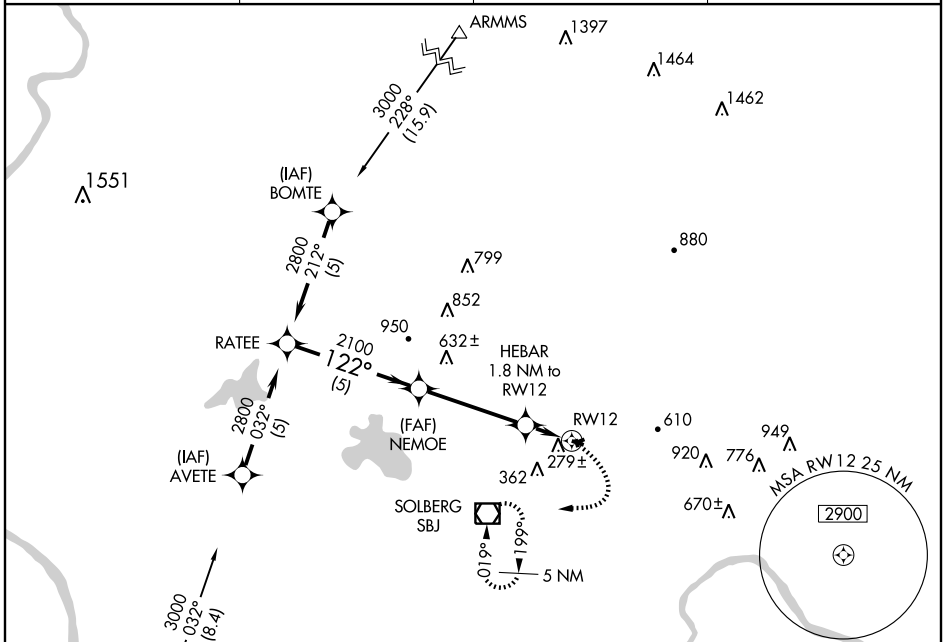


RNAV (GPS) RWY 12

SOMERVILLE / SOMERSET (SMQ)

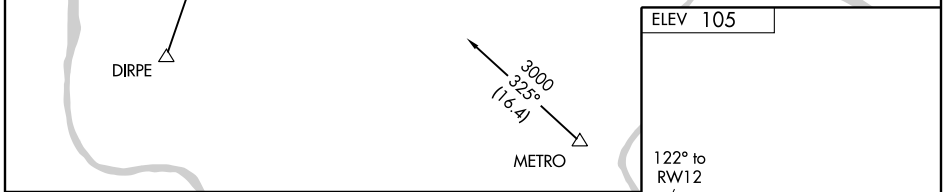
| | |
|------------------------|------------------------|
| APP CRS 122° | Rwy Idg 2733 |
| | TDZE 83 |
| | Apt Elev 105 |

| | | | |
|---|--|--|---------------------------------------|
| <p>▼ GPS or RNP-0.3 required. DME/DME RNP-0.3 NA. Procedure not authorized at night except by prior arrangement for runway lights.</p> <p>▲ NA</p> | <p>MISSED APPROACH: Climbing right turn to 2500 direct SBJ VOR/DME and hold.</p> | | |
| <p>ASOS 120.6</p> | <p>NEW YORK APP CON 132.8 379.9</p> | | <p>GCO 121.725</p> |
| | | | <p>UNICOM 123.0 (CTAF)</p> |

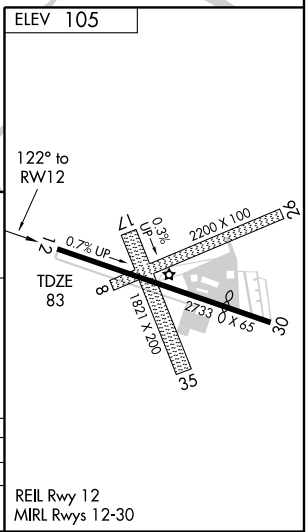


NE-2, 22 OCT 2009 to 19 NOV 2009

NE-2, 22 OCT 2009 to 19 NOV 2009



| | | | |
|-------------------|------|------|------|
| Procedure Turn NA | 2800 | 2100 | 720 |
| | 5 NM | | 4 NM |
| | | | 1.8 |



| | | | | |
|----------|----------------------|----------------------|---|----|
| CATEGORY | A | B | C | D |
| LNAV MDA | 560-1 | 477 (500-1) | | NA |
| CIRCLING | 640-1 535 (600-1) | 700-1 595 (600-1) | | NA |

REIL Rwy 12
MIRL Rwy 12-30