

MERIDIAN, MISSISSIPPI

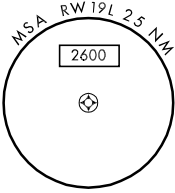
RNAV (GPS) RWY 19L

APCH CRS 188°	Rwy Idg TDZE Arpt Elev	7999 316 316
-------------------------	------------------------------	---

AL-5079 [USN]

MERIDIAN NAS (MC CAIN FIELD) (KNMM)

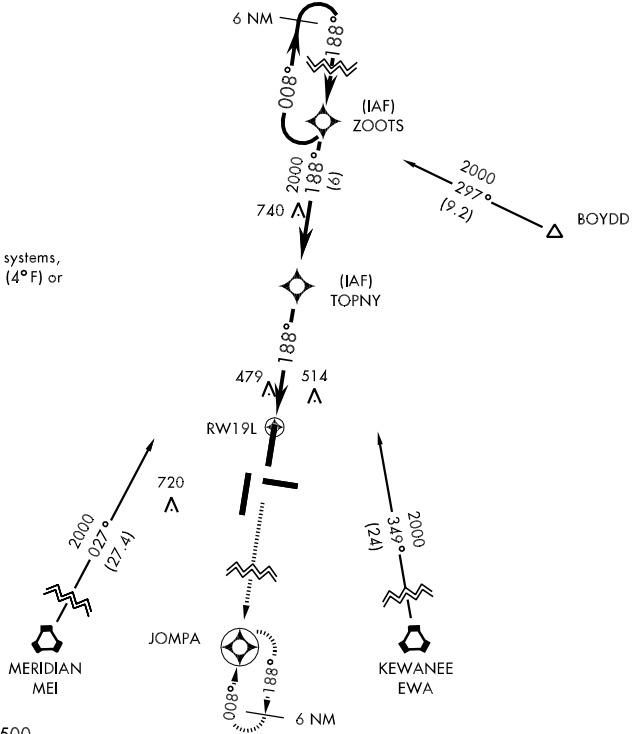
▼ * When ALS inop, increase CAT AB vis to 1 mile, ** CAT C to 1½ miles, CAT DE to 1½ miles. When ALS inop, increase All CAT vis to 1¾ miles.	SSALR (A3)	MISSED APPROACH: Climb to 2100 direct JOMPA and hold.			
	ATIS ★ 273.2	MERIDIAN APP CON 120.95 276.4	NAVY MC CAIN TOWER ★ 126.2 340.2	GND CON 336.4	CINC DEL 301.0



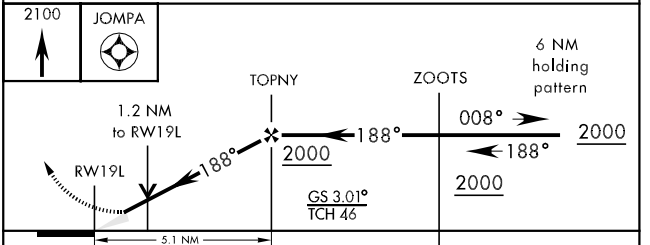
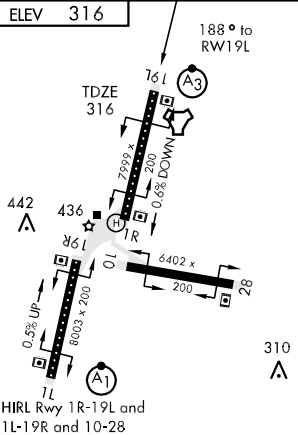
For uncompensated BaroVNAV systems, LNAV/VNAV NA below -15°C (4°F) or above 41°C (107°F).

DME/DME RNP -0.3 NA.

1544
▲



EMERG SAFE ALT 100 NM 3500



CATEGORY	A	B	C	D	E
LNAV MDA *	760-½	444 (500-½)	760-¾ 444 (500-¾)	760-1	444 (500-1)
LNAV/VNAV DA **	820-1¼		504 (600-1¼)		
CIRCLING	820-1	504 (600-1)	820-1½ 504 (600-1½)	880-2 564 (600-2)	1060-2¾ 744 (800-2¾)

MERIDIAN, MISSISSIPPI

32°33'N-88°33'W

MERIDIAN NAS (MC CAIN FIELD) (KNMM)

Orig 09295

RNAV (GPS) RWY 19L

SC-4, 22 OCT 2009 to 19 NOV 2009

SC-4, 22 OCT 2009 to 19 NOV 2009