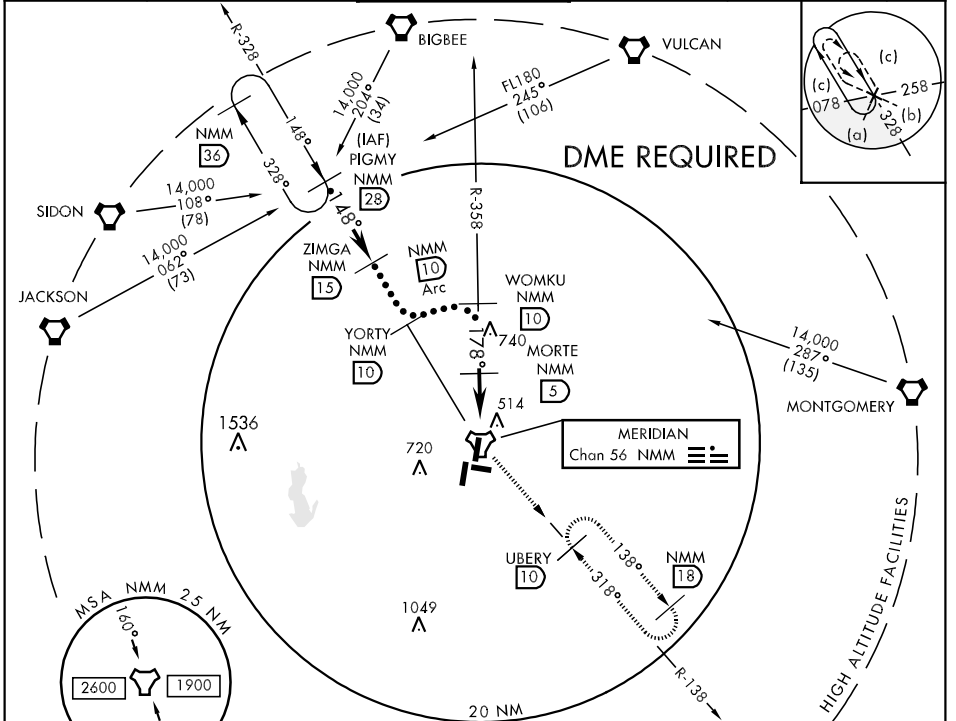


TACAN NMM Chan 56	APCH CRS 178°	Rwy Idg TDZE 7999 Arpt Elev 316	JAL-5079 [USN]	MERIDIAN NAS (MC CAIN FIELD) (KNMM)
--------------------------	----------------------	--	----------------	-------------------------------------

▼ * When ALS inop, increase CAT C vis to 1 1/4 miles, CAT D to 1 1/2 miles, CAT E to 1 3/4 miles.

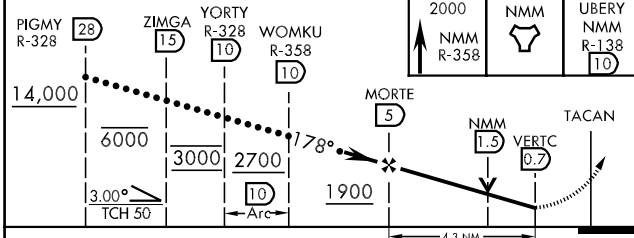
SSALR MISSED APPROACH: Climb to 2000 via NMM R-358 to TACAN then via R-138 to UBERY and hold.

ATIS ★ 273.2	MERIDIAN APP CON 120.95 276.4	NAVY MC CAIN TOWER ★ 126.2 340.2	GND CON 336.4	CLNC DEL 301.0	ASR/PAR
---------------------	--------------------------------------	---	----------------------	-----------------------	---------



SC-4, 22 OCT 2009 to 19 NOV 2009

SC-4, 22 OCT 2009 to 19 NOV 2009



CATEGORY	C	D	E
S- 19L *	780-3/4 464 (500-3/4)	780-1 464 (500-1)	780-1 1/4 464 (500-1 1/4)
CIRCLING	820-1 1/2 504 (600-1 1/2)	880-2 564 (600-2)	1060-2 3/4 744 (800-2 3/4)

