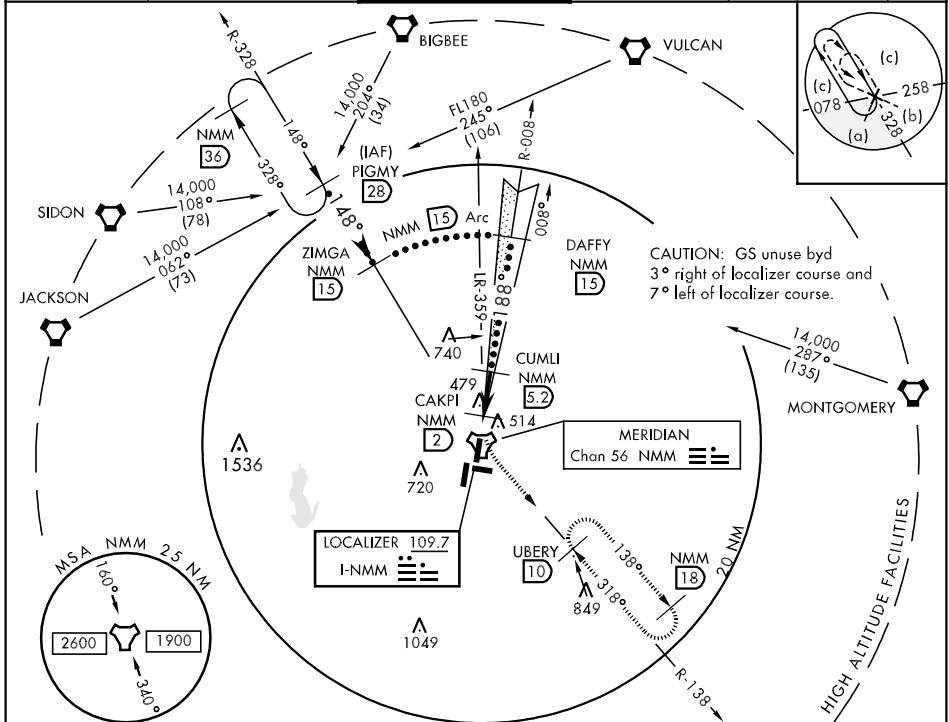


LOC I-NMM 109.7	APCH CRS 188°	Rwy Idg TDZE Arpt Elev 7999 316 316	JAL-5079 [USN]	MERIDIAN NAS (MC CAIN FIELD) (KNMM)
* When ALS inop, increase CAT CDE vis to 3/4 mile. ** When ALS inop, increase CAT C vis to 1 mile, CAT DE to 1 1/4 miles.			SSALR 	MISSED APPROACH: Climbing left turn to 2000 via NMM R-138 to UBERY and hold.

ATIS * 273.2	MERIDIAN APP CON 120.95 276.4	NAVY MC CAIN TOWER * 126.2 340.2	GND CON 336.4	CLNC DEL 301.0	ASR/PAR
------------------------	---	--	-------------------------	--------------------------	---------



SC-4, 22 OCT 2009 to 19 NOV 2009

SC-4, 22 OCT 2009 to 19 NOV 2009

EMERG SAFE ALT 100 NM 3500

2000 NMM R-138	UBERY (10)	DAFFY R-008 (15)	ZIMGA R-328 (15)	PIGMY R-328 (28)
TACAN FAXAR (0.7)	CAKPI (2)	CUMLI (5.2)	14,000	14,000
960		2000	4000	6000
.5		1.3 NM	3.2 NM	
CATEGORY	C	D	E	
S-ILS 19L *	516-1/2	200	(200-1/2)	
S-LOC 19L **	700-3/4	384	(400-3/4)	
CIRCLING	820-1 1/2	880-2	1060-2 3/4	
	504 (600-1 1/2)	564 (600-2)	744 (800-2 3/4)	

