

RNAV (GPS) RWY 28

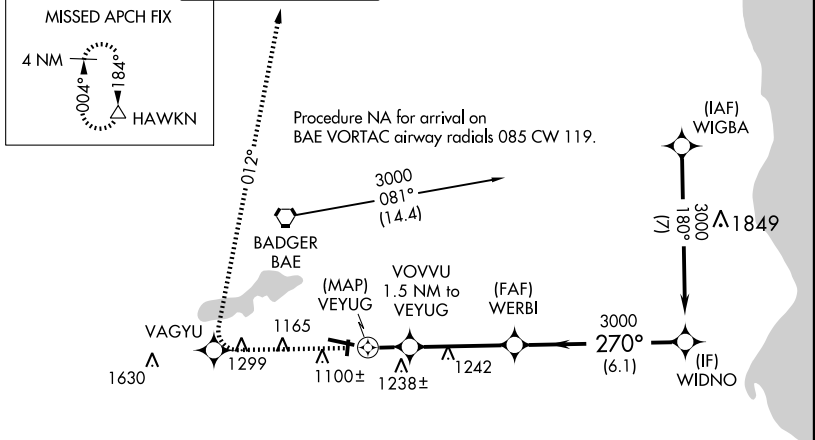
WAUKESHA COUNTY (UES)

APP CRS	Rwy Idg	5848
270°	TDZE	906
	Apt Elev	911

▽ DME/DME RNP-0.3 NA. Visibility reduction by helicopters NA. When local altimeter setting not received, use Lawrence J Timmerman altimeter setting and increase all MDA 60 feet, increase Circling Cat. C and D visibility ¼ mile.

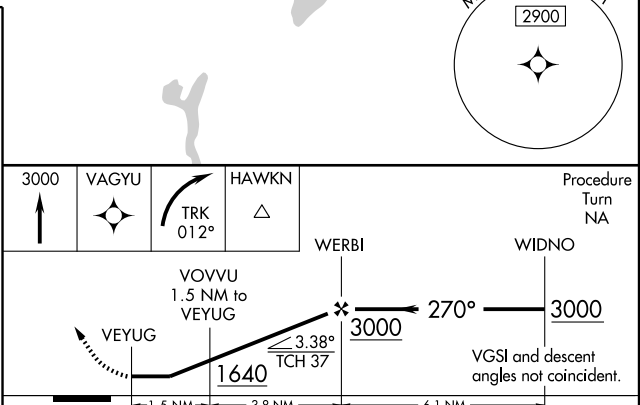
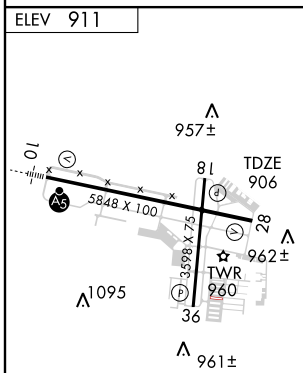
△ MISSED APPROACH: Climb to 3000 direct VAGYU and right turn via 012° track to HAWKN and hold.

ATIS 118.875	MILWAUKEE APP CON 128.7 (North) 307.0	WAUKESHA TOWER ★ 123.7 (CTAF) 0	GND CON 121.6	MILWAUKEE CLNC DEL 128.7 (When tower closed)	UNICOM 122.95
------------------------	---	---	-------------------------	--	-------------------------



EC-3, 22 OCT 2009 to 19 NOV 2009

EC-3, 22 OCT 2009 to 19 NOV 2009



CATEGORY	A	B	C	D
LNAV MDA	1420-1	514 (600-1)	1420-1½ 514 (600-1½)	1420-1¾ 514 (600-1¾)
CIRCLING	1460-1 549 (600-1)	1480-1 569 (600-1)	1520-1¾ 609 (700-1¾)	1600-2¼ 689 (700-2¼)

HIRL Rwy 10-28 **1**

MIRL Rwy 18-36 **1**

REIL Rwy 18, 28 and 36 **1**