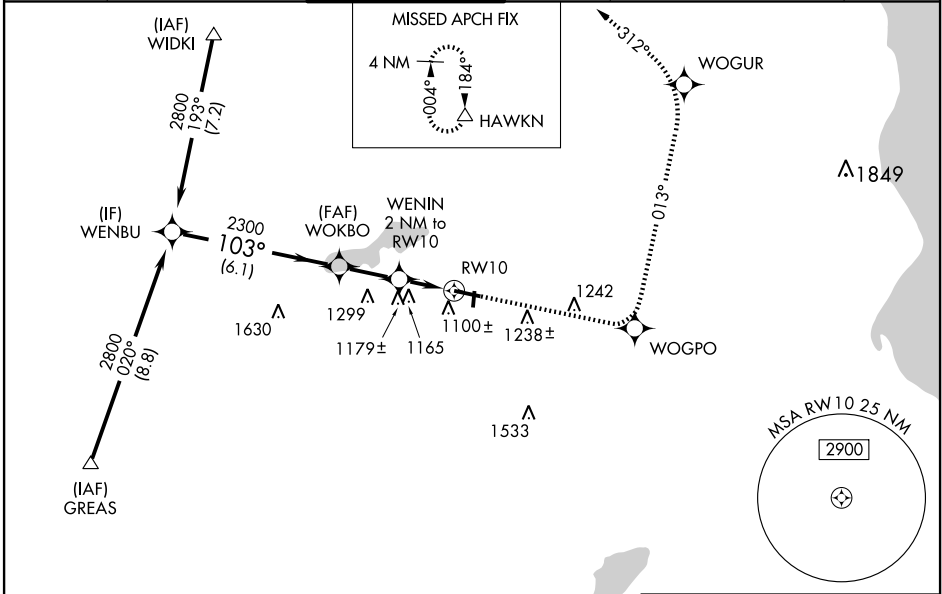


WAAS CH 53411 W10A	APP CRS 103°	Rwy Idg TDZE 5848 901 Apt Elev 911
--	------------------------	--

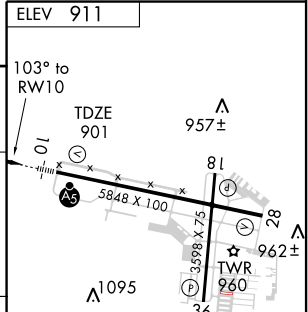
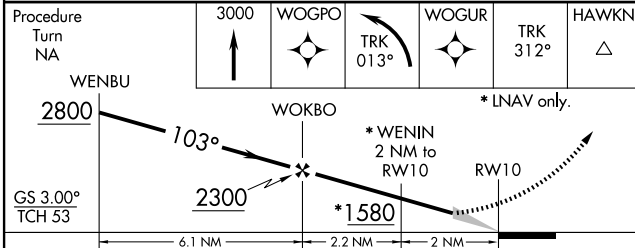
RNAV (GPS) RWY 10

WAUKESHA COUNTY (UES)

<p>▼ Baro-VNAV NA when using Lawrence J Timmerman altimeter setting. For uncompensated Baro-VNAV systems, LNAV/VNAV NA below -16°C (4°F) or above 46°C (114°F). DME/DME RNP-0.3 NA. When local altimeter setting not received, use Lawrence J Timmerman altimeter setting and increase all DA 46 feet and all MDA 60 feet, increase LNAV/VNAV all Cats. visibility ½ mile; increase Circling Cat. D visibility ½ mile.</p>	<p>▲</p>	<p>MALSR</p>	<p>MISSED APPROACH: Climb to 3000 direct WOGPO and left turn via 013° track to WOGUR and via 312° track to HAWKN and hold.</p>		
	<p>ATIS 118.875</p>	<p>MILWAUKEE APP CON 128.7 (North) 307.0</p>	<p>WAUKESHA TOWER * 123.7 (CTAF) 0</p>	<p>GND CON 121.6</p>	<p>MILWAUKEE CLNC DEL 128.7 (When tower closed)</p>



Procedure NA for arrivals at GREAS via V63 Southwest bound.



CATEGORY	A	B	C	D
LPV DA	1101/24		200 (200-½)	
LNAV/VNAV DA	1537-1¾		636 (700-1¾)	
LNAV MDA	1440/24	539 (600-½)	1440/50 539 (600-1)	1440/60 539 (600-1¼)
CIRCLING	1460-1 549 (600-1)	1480-1 569 (600-1)	1520-1¾ 609 (700-1¾)	1600-2¼ 689 (700-2¼)

HIRL Rwy 10-28 **0**
MIRL Rwy 18-36 **0**
REIL Rwy 18, 28 and 36 **0**

EC-3, 22 OCT 2009 to 19 NOV 2009

EC-3, 22 OCT 2009 to 19 NOV 2009