

# ILS or LOC RWY 10

WAUKESHA COUNTY (U/ES)

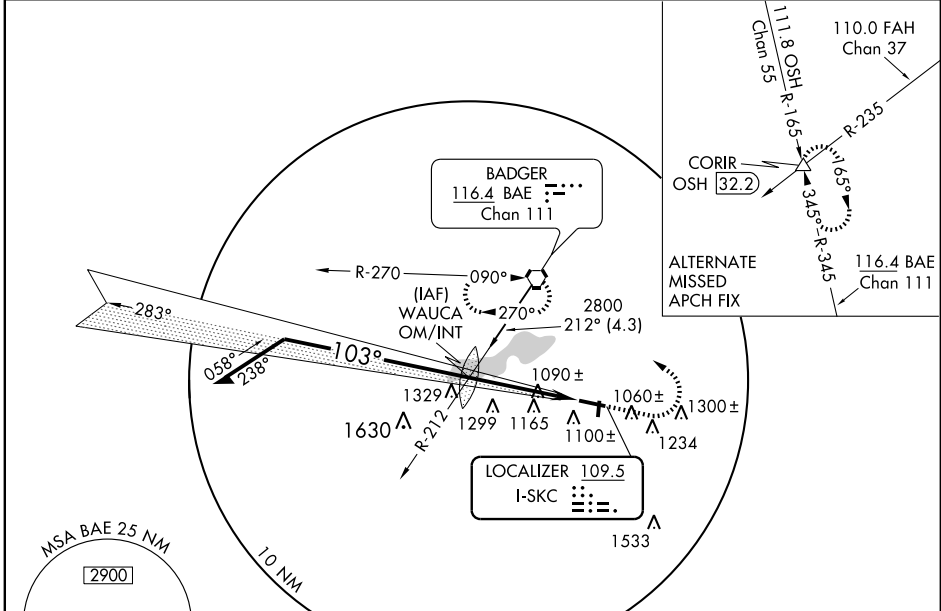
LOC I-SKC <b>109.5</b>	APP CRS <b>103°</b>	Rwy Idg <b>5848</b> TDZE <b>901</b> Apt Elev <b>911</b>
---------------------------	------------------------	---

**⚠** When local altimeter setting not received, use Lawrence J. Timmerman altimeter setting and increase DA to 1147 and all MDAs 60 feet, increase S-LOC 10 Cat. C visibility to RVR 5000, Cat. D to RVR 6000. Increase circling visibility Cat. D ¼ mile.  
\* RVR 1800 authorized with the use of FD or AP or HUD to DA.

**MALSR**  
**A5**

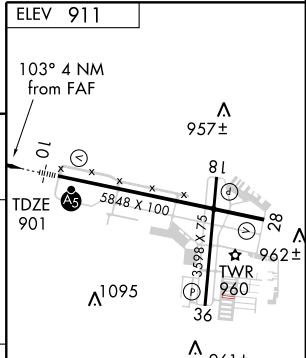
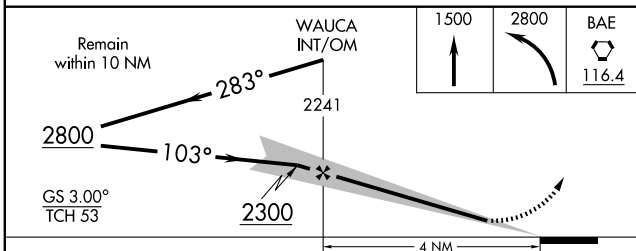
MISSED APPROACH: Climb to 1500 then climbing left turn to 2800 direct BAE VORTAC and hold.

ATIS <b>118.875</b>	MILWAUKEE APP CON <b>128.7 (North) 307.0</b>	WAUKESHA TOWER * <b>123.7 (CTAF) 0</b>	GND CON <b>121.6</b>	MILWAUKEE CLNC DEL <b>128.7 (When tower closed)</b>	UNICOM <b>122.95</b>
------------------------	---	---	-------------------------	--	-------------------------



EC-3, 22 OCT 2009 to 19 NOV 2009

EC-3, 22 OCT 2009 to 19 NOV 2009



CATEGORY	A	B	C	D
S-ILS-10		*1101/24 200 (200-½)		
S-LOC-10	1360/24 459 (500-½)		1360/40 459 (500-¾)	1360/50 459 (500-1)
CIRCLING	1460-1 549 (600-1)	1480-1 569 (600-1)	1520-1¾ 609 (700-1¾)	1600-2¼ 689 (700-2¼)

HIRL Rwy 10-28  
MIRL Rwy 18-36  
REIL Rwy 18, 28 and 36

FAF to MAP 4 NM

Knots	60	90	120	150	180
Min:Seq	4:00	2:40	2:00	1:36	1:20