

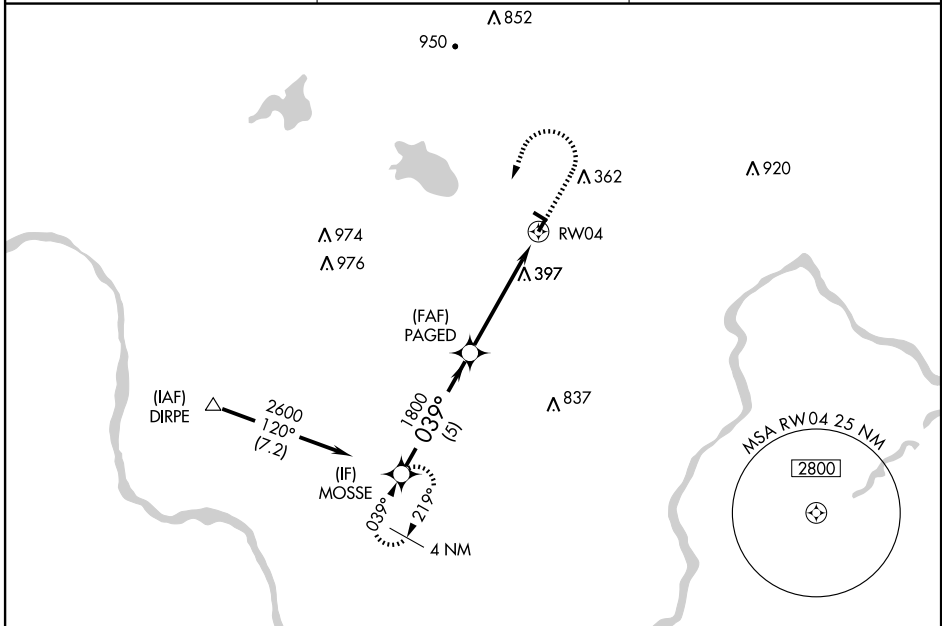
RNAV (GPS) RWY 4

READINGTON / SOLBERG-HUNTERDON (N51)

APP CRS	Rwy Idg	3000
039°	TDZE	179
	Apt Elev	195

▼ Obtain local altimeter setting on CTAF, when not received, use Newark Liberty Intl altimeter setting.
▲ NA MISSED APPROACH: Climb to 1000, then climbing left turn to 2600 direct MOSSE WP and hold.

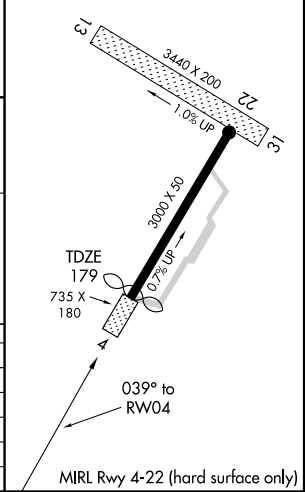
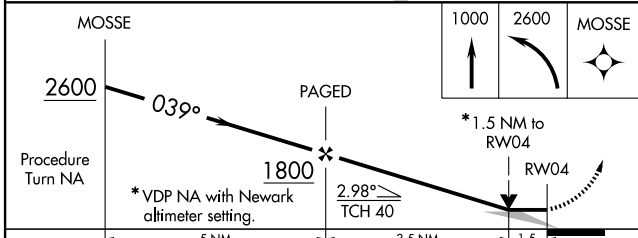
NEW YORK APP CON 132.8 379.9	UNICOM 122.8 (CTAF)	GCO 121.725
--	-------------------------------	-----------------------



NE-2, 22 OCT 2009 to 19 NOV 2009

NE-2, 22 OCT 2009 to 19 NOV 2009

ELEV 195 Rwy 4 Idg 3000'



CATEGORY	A	B	C	D
LNAV MDA	700-1	521 (600-1)		NA
CIRCLING	700-1	505 (600-1)		NA
NEWARK LIBERTY INTL ALTIMETER SETTING MINIMUMS				
LNAV MDA	800-1	621 (700-1)		NA
CIRCLING	800-1	605 (700-1)		NA