

RNAV (GPS) RWY 4

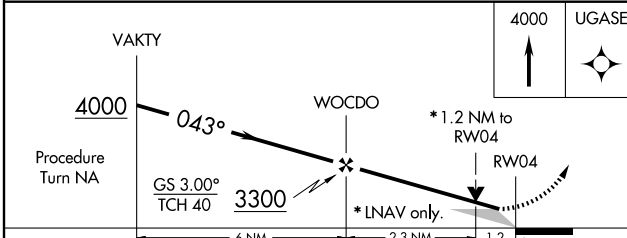
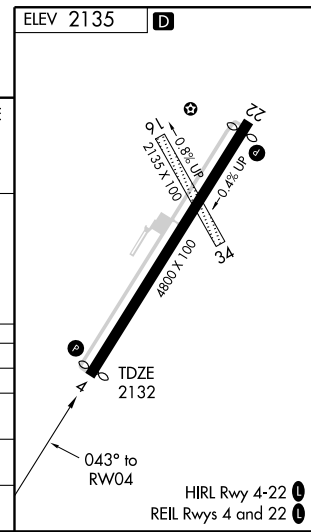
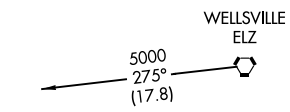
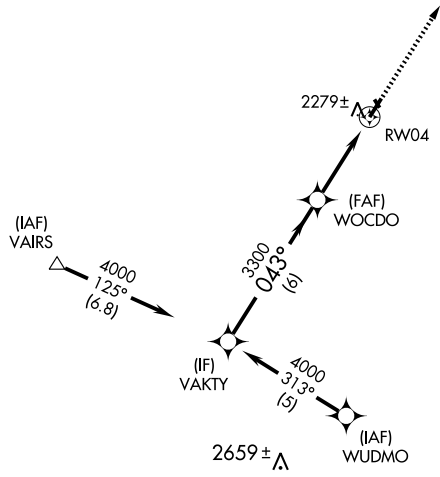
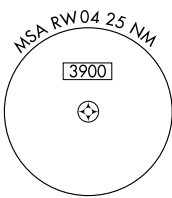
OLEAN / CATTARAUGUS COUNTY-OLEAN (OLE)

WAAS CH 53401 W04A	APP CRS 043°	Rwy Idg 4700
		TDZE 2132
		Apt Elev 2135

MISSED APPROACH:
Climb to 4000 direct
UGASE and hold.

DME/DME RNP-0.3 NA. When VGSI inop, circling Rwy 22 NA at night. If local altimeter setting not received, use Bradford, PA altimeter setting and increase all DAs/MDAs 80 feet.
NA For uncompensated Baro-VNAV systems, LNAV/VNAV NA below -19°C (-2°F) or above 44°C (111°F). VDP and Baro-VNAV NA when using Bradford, PA altimeter setting.

AWOS-3 118.375	CLEVELAND CENTER 124.325 353.850	UNICOM 122.8 (CTAF)
--------------------------	--	-------------------------------



CATEGORY	A	B	C	D
LPV DA	2382-1		250 (300-1)	
LNAV/VNAV DA	2549-1½		417 (500-1½)	
LNAV MDA	2560-1	428 (500-1)	2560-1¼ 428 (500-1¼)	2560-1½ 428 (500-1½)
CIRCLING	2620-1½		485 (500-1½)	
			2700-2 565 (600-2)	

NE-2, 22 OCT 2009 to 19 NOV 2009

NE-2, 22 OCT 2009 to 19 NOV 2009

RNAV (GPS) RWY 4