

# LOC RWY 22

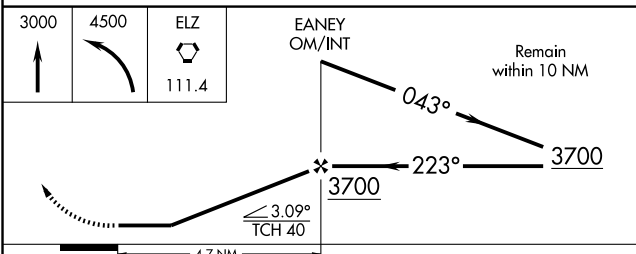
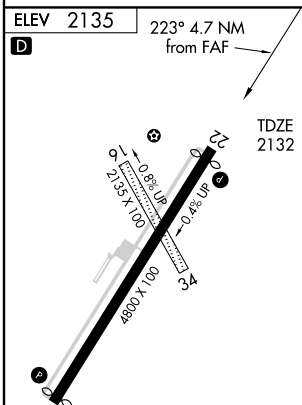
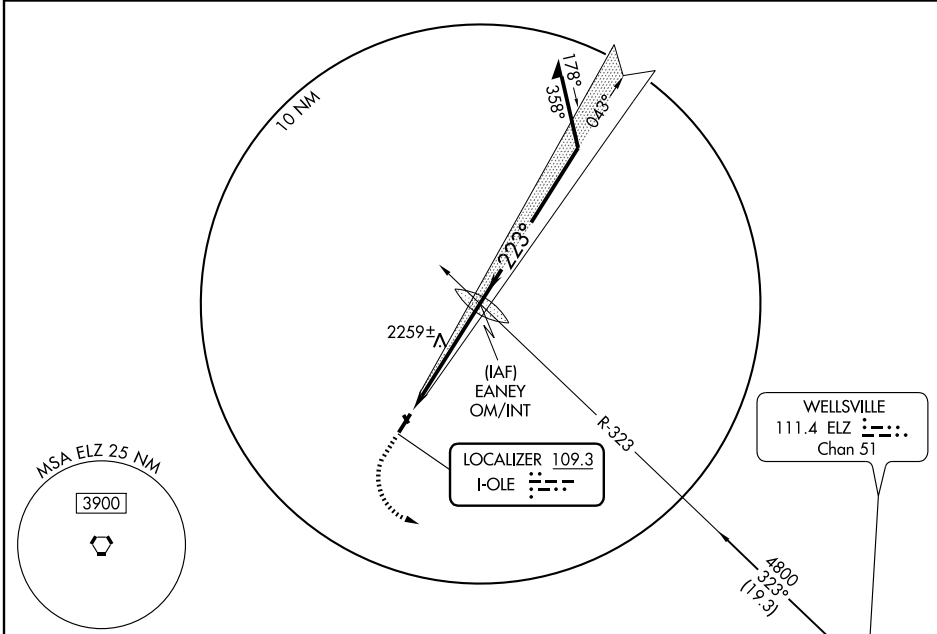
OLEAN / CATTARAUGUS COUNTY-OLEAN (OLE)

LOC I-OLE <b>109.3</b>	APP CRS <b>223°</b>	Rwy Idg <b>4600</b> TDZE <b>2132</b> Apt Elev <b>2135</b>
---------------------------	------------------------	--

**▽** When VGSi inop, straight-in/circling Rwy 22 procedure NA at night.  
**▲ NA** When local altimeter setting not received, use Bradford, PA altimeter setting and increase all MDAs 80 feet and S-22 Cat C and D visibility ¼ mile. Visibility reduction by helicopters NA.

**MISSED APPROACH:** Climb to 3000 then climbing left turn to 4500 direct ELZ VORTAC and hold.

AWOS-3 <b>118.375</b>	CLEVELAND CENTER <b>124.325 353.850</b>	UNICOM <b>122.8 (CTAF) 0</b>
--------------------------	--	---------------------------------



	FAF to MAP 4.7 NM					
	Knots	60	90	120	150	180
Min:Sec	4:42	3:08	2:21	1:53	1:34	
CATEGORY	A	B	C	D		
S-22	2520-1 388 (400-1)			2520-1½ 388 (400-1½)		
CIRCLING	2620-1 485 (500-1)		2620-1½ 485 (500-1½)		2700-2 565 (600-2)	

NE-2, 22 OCT 2009 to 19 NOV 2009

NE-2, 22 OCT 2009 to 19 NOV 2009