

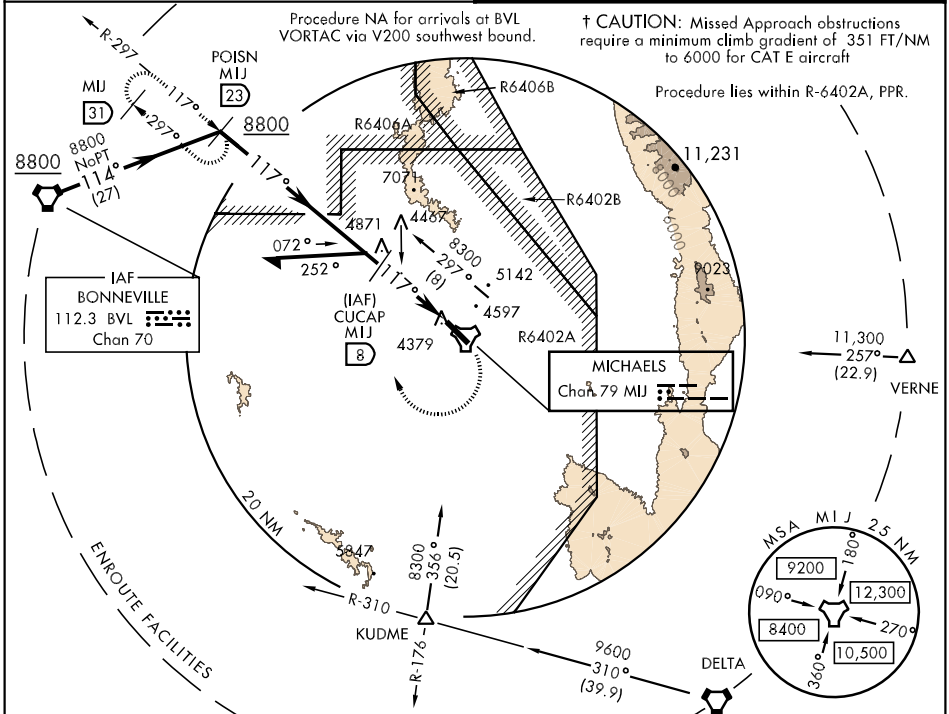
TACAN Chan 79	MIJ	APCH CRS 117°	Rwy ldg TDZE Arpt Elev 10,000 4342 4350
-------------------------	-----	-------------------------	---

AL-5071 [USA]

MICHAEL AAF (KDPG)

<p>▼ * Obtain local altimeter setting on CTAF; when not received, use Wendover altimeter setting.</p> <p>▲ NA</p>	<p>SALSF</p> <p>(A2)</p>	<p>† MISSED APPROACH: Climbing right turn to 8800 via MIJ TACAN R-297 to POISN/23 DME and hold.</p>
---	--------------------------	---

<p>CLOVER CON</p> <p>134.1 363.5</p>	<p>CTAF</p> <p>126.2 0270.3</p>
---	--



VGSI and descent angles not coincident.

Remain within 15 NM of CUCAP.

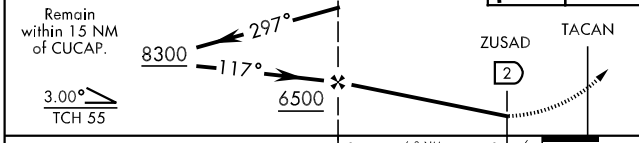
3.00° TCH 55

8800 POISN MIJ 23 ELEV 4350 Rwy 12 ldg 10,000' Rwy 30 ldg 10,000'

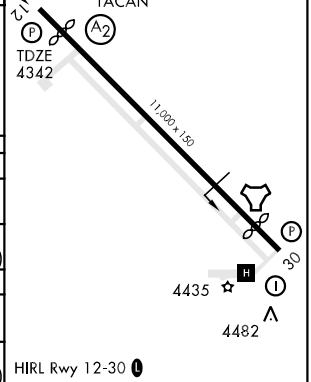
MIJ R-297

117° to TACAN

TDZE 4342



CATEGORY	A	B	C	D	E
S-12	4800-1 458 (500-1)		4800-1¼ 458 (500-1¼)	4800-1½ 458 (500-1½)	
CIRCLING	4800-1 449 (500-1)	4820-1 469 (500-1)	4820-1½ 469 (500-1½)	4920-2 569 (600-2)	5900-3 1549 (1600-3)
* WENDOVER ALTIMETER SETTING MINIMUMS					
S-12	4960-1 618 (700-1)		4960-1¼ 618 (700-1¼)	4960-2 618 (700-2)	4960-2¼ 618 (700-2¼)
CIRCLING	4960-1 609 (700-1)		4960-1¼ 609 (700-1¼)	5060-2¼ 709 (800-2¼)	6060-3 1709 (1800-3)



SW-4, 22 OCT 2009 to 19 NOV 2009

SW-4, 22 OCT 2009 to 19 NOV 2009