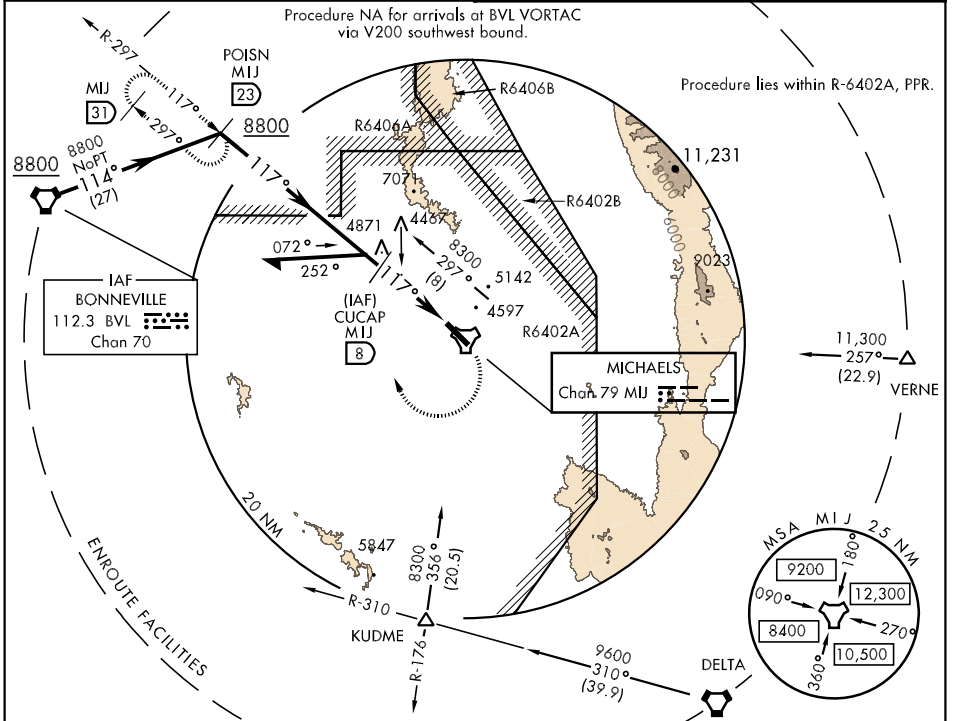


TACAN Chan <b>79</b>	MIJ <b>117°</b>	APCH CRS <b>117°</b>	Rwy ldg <b>10,000</b> TDZE <b>4342</b> Arpt Elev <b>4350</b>	AL-5071 [USA]	MICHAEL AAF (KDPG)
-------------------------	--------------------	-------------------------	--	---------------	--------------------

▼ \* Obtain local altimeter setting on CTAF; when not received, use Wendover altimeter setting.  
▲ NA

Ⓐ SALSF Ⓐ MISSED APPROACH: Climbing right turn to 8800 via MIJ TACAN R-297 to POISN/23 DME and hold.

CLOVER CON <b>134.1 363.5</b>	CTAF <b>126.2 0 270.3</b>
----------------------------------	------------------------------



VGSI and descent angles not coincident.  
 Remain within 15 NM of CUCAP.  
 3.00° TCH 55

CUCAP 8  
 8300 297°  
 6500 117°  
 6.0 NM

8800 MIJ R-297  
 POISN MIJ 23  
 ELEV 4350  
 Rwy 12 ldg 10,000'  
 Rwy 30 ldg 10,000'

117° to TACAN  
 TDZE 4342  
 11,000-150  
 4435 HIRL Rwy 12-30  
 4482

CATEGORY	A	B	C	D	E
S-12	4800-1 458 (500-1)		4800-1¼ 458 (500-1¼)	4800-1½ 458 (500-1½)	5220-3 878 (900-3)
CIRCLING	4800-1 449 (500-1)	4820-1 469 (500-1)	4820-1½ 469 (500-1½)	4920-2 569 (600-2)	5900-3 1549 (1600-3)

\* WENDOVER ALTIMETER SETTING MINIMUMS

S-12	4960-1 618 (700-1)	4960-1¼ 618 (700-1¼)	4960-2 618 (700-2)	5360-3 1018 (1100-3)
CIRCLING	4960-1 609 (700-1)	4960-1¼ 609 (700-1¼)	5060-2¼ 709 (800-2¼)	6060-3 1709 (1800-3)

SW-4, 22 OCT 2009 to 19 NOV 2009

SW-4, 22 OCT 2009 to 19 NOV 2009