

APCH CRS **122°**
 Rwy ldg **10,000**
 TDZE **4342**
 Arpt Elev **4350**

AL-5071 [USA]

MICHAEL AAF (KDPG)

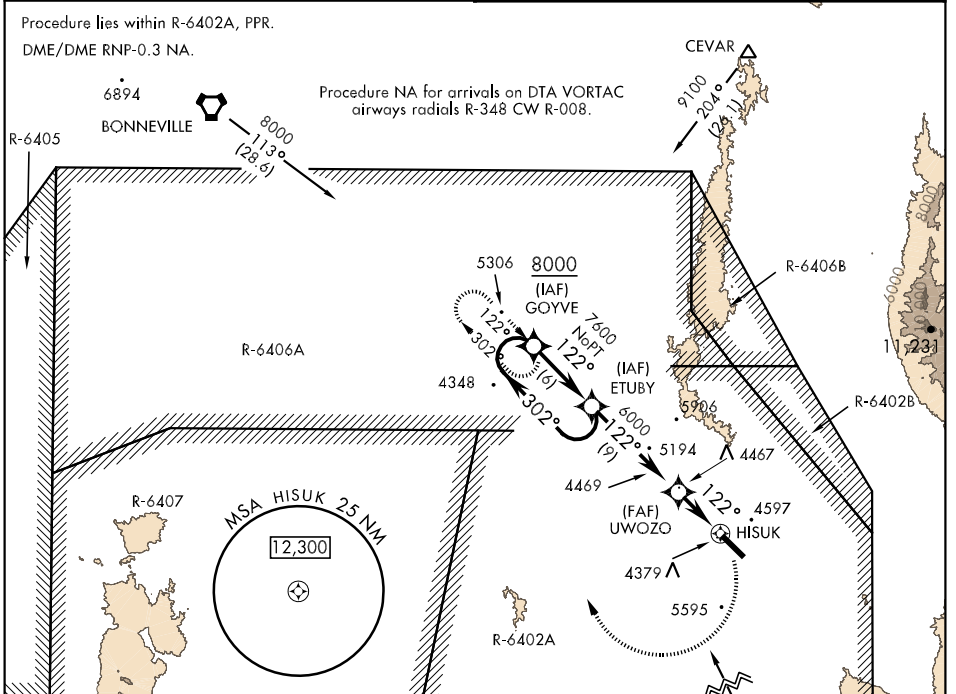
▼ * Obtain local altimeter setting on CTAF; when not received, use Wendover altimeter setting.
▲ NA

SALSF
(A2)

MISSED APPROACH: Climbing right turn to 8000 direct GOYVE and hold.

CLOVER CON
134.1 363.5

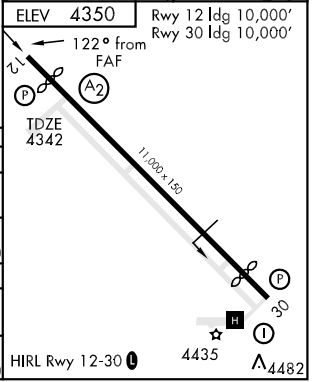
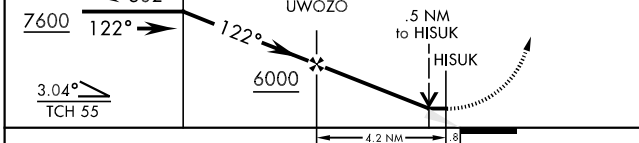
CTAF
126.2 0270.3



VGSI and descent angles not coincident

VDP NA with Wendover altimeter setting minimums.

8000 **GOYVE**



CATEGORY	A	B	C	D	E
LNAV MDA	4820-1 478 (500-1)		4820-1¼ 478 (500-1¼)	4820-1½ 478 (500-1½)	5120-2¾ 778 (800-2¾)
CIRCLING	4820-1 469 (500-1)		4820-1½ 469 (500-1½)	4920-2 569 (600-2)	5900-3 1549 (1600-3)
* WENDOVER ALTIMETER SETTING MINIMUMS					
LNAV MDA	4980-1 638 (700-1)		4980-1¼ 638 (700-1¼)	4980-2 638 (700-2)	5280-3 938 (1000-3)
CIRCLING	4980-1 629 (700-1)		4980-1¼ 629 (700-1¼)	5060-2¼ 709 (800-2¼)	6060-3 1709 (1800-3)

SW-4, 22 OCT 2009 to 19 NOV 2009

SW-4, 22 OCT 2009 to 19 NOV 2009