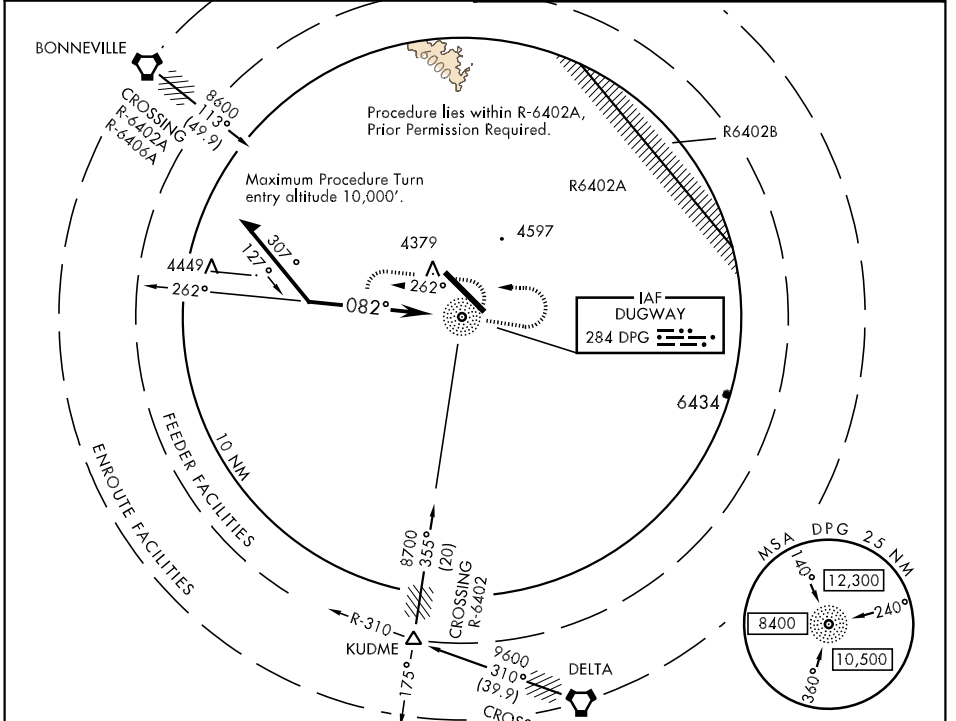


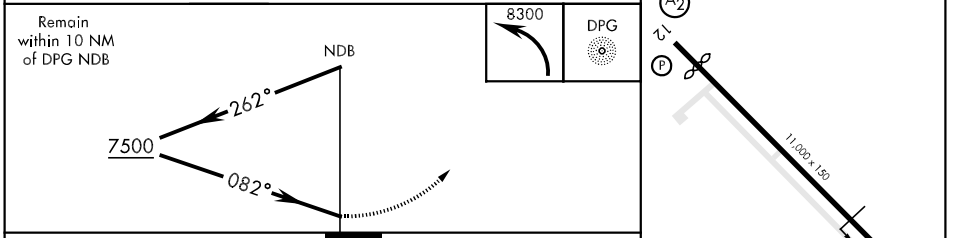
NDB DPG <b>284</b>	APCH CRS <b>082°</b>	Rwy Idg TDZE Arprt Elev <b>10,000</b> <b>N/A</b> <b>4350</b>	AL-5071 [USA]	MICHAEL AAF (KDPG)
-----------------------	-------------------------	---	---------------	--------------------

▽ \* Obtain local altimeter setting on CTAF; when not received, use Wendover altimeter setting.
 MISSED APPROACH: Climbing left turn to 8300 in DPG NDB holding pattern.

CLOVER CON <b>134.1 363.5</b>	CTAF <b>126.2 270.3</b>
----------------------------------	----------------------------



Remain within 10 NM of DPG NDB	ELEV 4350 Rwy 12 Idg 10,000' Rwy 30 Idg 10,000'
--------------------------------	---



CATEGORY	A	B	C	D
CIRCLING	6000-1¼ 1649 (1700-1¼)	6000-1½ 1649 (1700-1½)	6000-3 1649	(1700-3)
* WENDOVER ALTIMETER SETTING MINIMUMS				
CIRCLING	6160-1¼ 1809 (1900-1¼)	6160-1½ 1809 (1900-1½)	6160-3 1809	(1900-3)

DUGWAY PROVING GROUND, UTAH 40°12'N-112°56'W MICHAEL AAF (KDPG)

SW-4, 22 OCT 2009 to 19 NOV 2009

SW-4, 22 OCT 2009 to 19 NOV 2009