

NDB DPG <b>284</b>	APCH CRS <b>080°</b>	Rwy ldg TDZE <b>10,000</b> N/A Arprt Elev <b>4350</b>	AL-5071 [USA]	MICHAEL AAF (KDPG)
-----------------------	-------------------------	--	---------------	--------------------

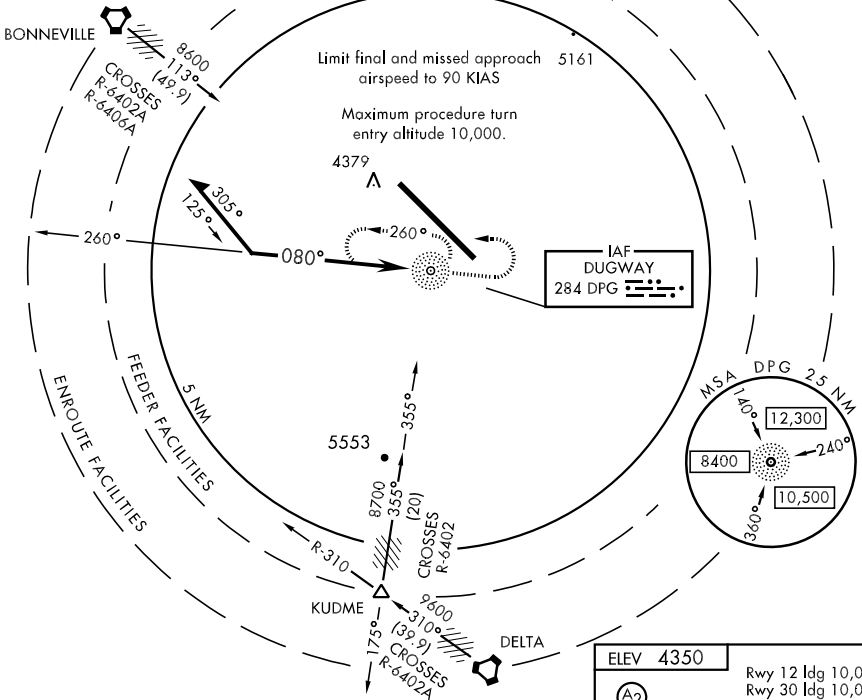
**▽** \* Obtain local altimeter setting on CTAF; when not received, use Wendover altimeter setting.

**▲** NA

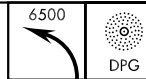
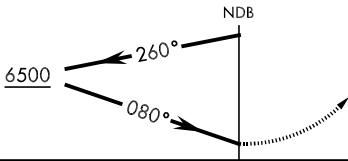
MISSED APPROACH: Climbing left turn to 6500 in DPG NDB holding pattern.

CLOVER CON <b>134.1 363.5</b>	CTAF <b>126.2 270.3</b>
----------------------------------	----------------------------

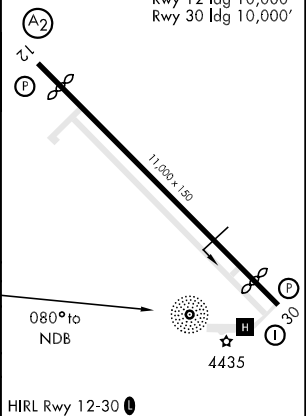
Procedure lies within restricted areas, PPR.  
Limit final and missed approach airspeed to 90 KIAS.



Remain within 5 NM of DPG NDB



ELEV 4350  
Rwy 12 ldg 10,000'  
Rwy 30 ldg 10,000'



CATEGORY	COPTER		
H-080°	5160-1	809	(900-1)
* WENDOVER ALTIMETER SETTING MINIMUMS			
H-080°	5320-1	969	(1000-1)

SW-4, 22 OCT 2009 to 19 NOV 2009

SW-4, 22 OCT 2009 to 19 NOV 2009