

SANDUSKY, OHIO

AL-5068 (FAA)

VOR/DME SKY <b>109.2</b> Chan <b>29</b>	APP CRS <b>274°</b>	Rwy Idg TDZE Apt Elev	<b>3559</b> <b>577</b> <b>580</b>
---	------------------------	-----------------------------	---

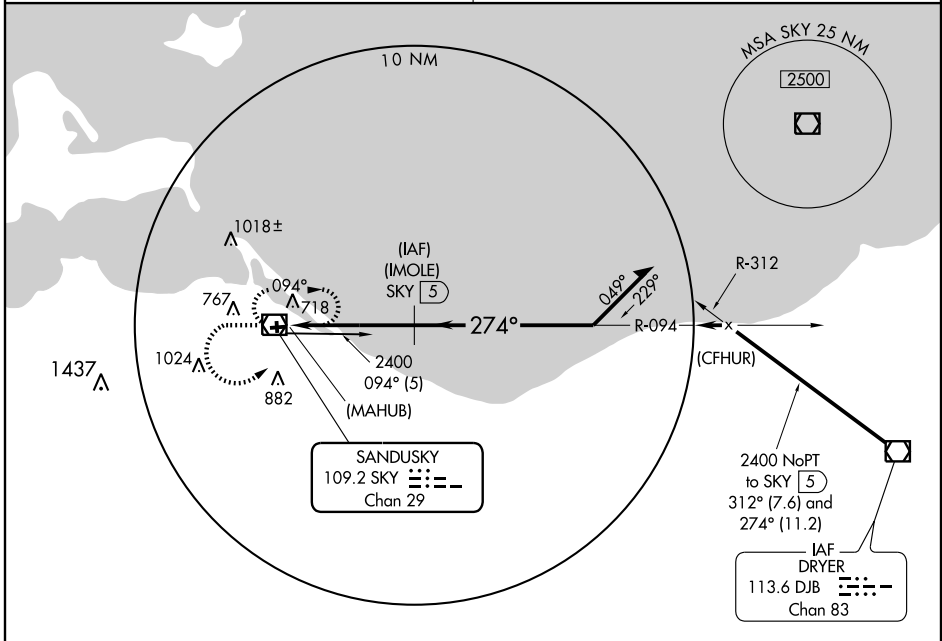
# VOR/DME or GPS RWY 27

SANDUSKY/ GRIFFING SANDUSKY (SKY)

Obtain local altimeter setting on CTAF; when not received, use Cleveland Hopkins altimeter setting.
 
 MISSED APPROACH: Climb to 3000, then left turn direct SKY VOR/DME and hold.

CLEVELAND APP CON **126.35 354.025**

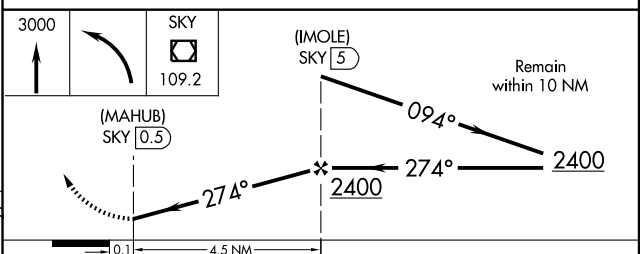
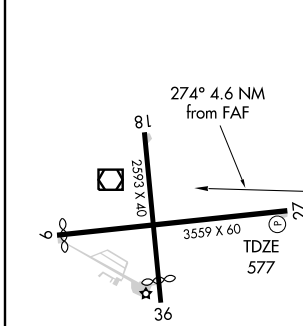
 UNICOM **123.0** (CTAF)



EC-2, 22 OCT 2009 to 19 NOV 2009

EC-2, 22 OCT 2009 to 19 NOV 2009

ELEV 580



CATEGORY	A	B	C	D
S-27	1020-1	443 (500-1)	1020-1½ 443 (500-1½)	NA
CIRCLING	1020-1 440 (500-1)	1160-1 580 (600-1)	1160-1½ 580 (600-1½)	NA
CLEVELAND HOPKINS ALTIMETER SETTING MINIMUMS				
S-27	1140-1	563 (600-1)	1140-1½ 563 (600-1½)	NA
CIRCLING	1140-1 560 (600-1)	1260-1 680 (700-1)	1260-2 680 (700-2)	NA

SANDUSKY, OHIO  
Amdt 2A 09015

41°26'N - 82°39'W

# VOR/DME or GPS RWY 27