

LEMOORE, CALIFORNIA

TACAN RWY 32L

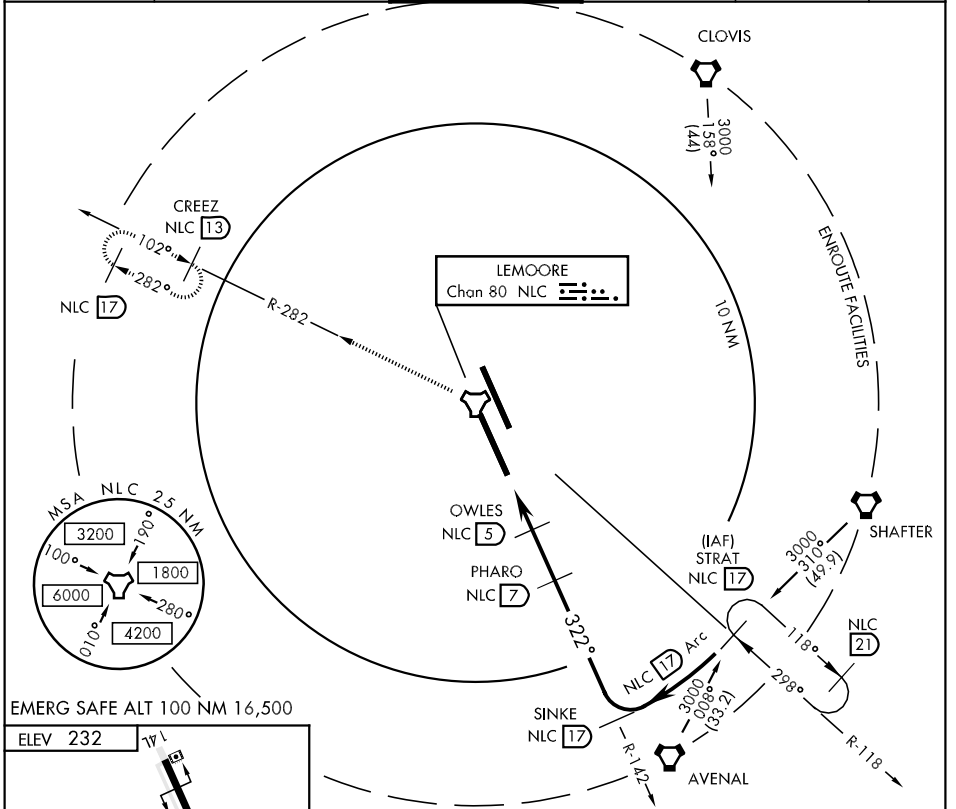
TACAN NLC Chan 80	APCH CRS 322°	Rwy ldg TDZE 230 Arpt Elev 232
-------------------	---------------	-----------------------------------

AL-5067 [USN]

LEMOORE NAS (REEVES FIELD) (KNLC)

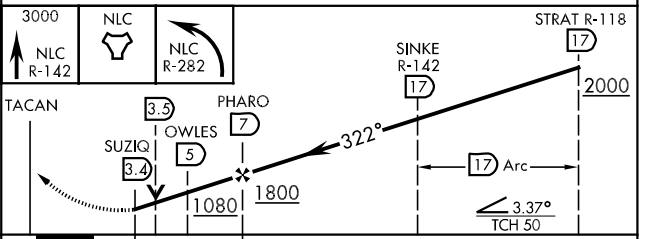
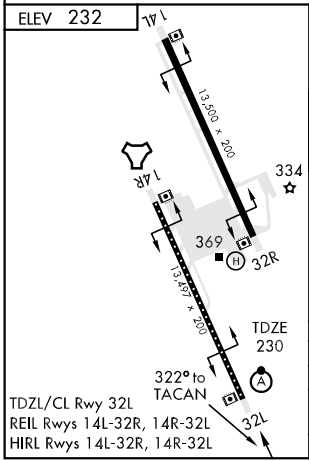
<p>▼ * When ALS inop, increase CAT ABCD RVR to 50 and vis to 1 mile. ** When ALS inop, increase CAT ABCD RVR to 24 and vis to ½ mile.</p>	<p>ALSF-2</p>	<p>MISSED APPROACH: Climb to 3000 via R-142 to NLC TACAN, then via R-282 to CREEZ and hold.</p>
---	---------------	---

<p>ATIS ★ 121.575 267.6</p>	<p>LEMOORE APP CON N 124.1 S 118.15 286.0</p>	<p>LEMOORE TOWER ★ 128.3 340.2</p>	<p>GND CON 121.65 305.2</p>	<p>CLNC DEL 124.1 380.8</p>	<p>ASR/PAR</p>
---------------------------------	---	--	---------------------------------	---------------------------------	----------------



SW-2, 22 OCT 2009 to 19 NOV 2009

SW-2, 22 OCT 2009 to 19 NOV 2009



CATEGORY	A	B	C	D
S-32L *		540/24	310	(400-½)
CIRCLING	680-1	700-1	700-1½	800-2
S-PAR 32L**	448 (500-1)	468 (500-1)	468 (500-1½)	568 (600-2)
	330/16		100	(100-¼) GS 3.0°

LEMOORE, CALIFORNIA
Amdt 4 08101

36°20'N-119°57'W

LEMOORE NAS (REEVES FIELD) (KNLC)

TACAN RWY 32L