

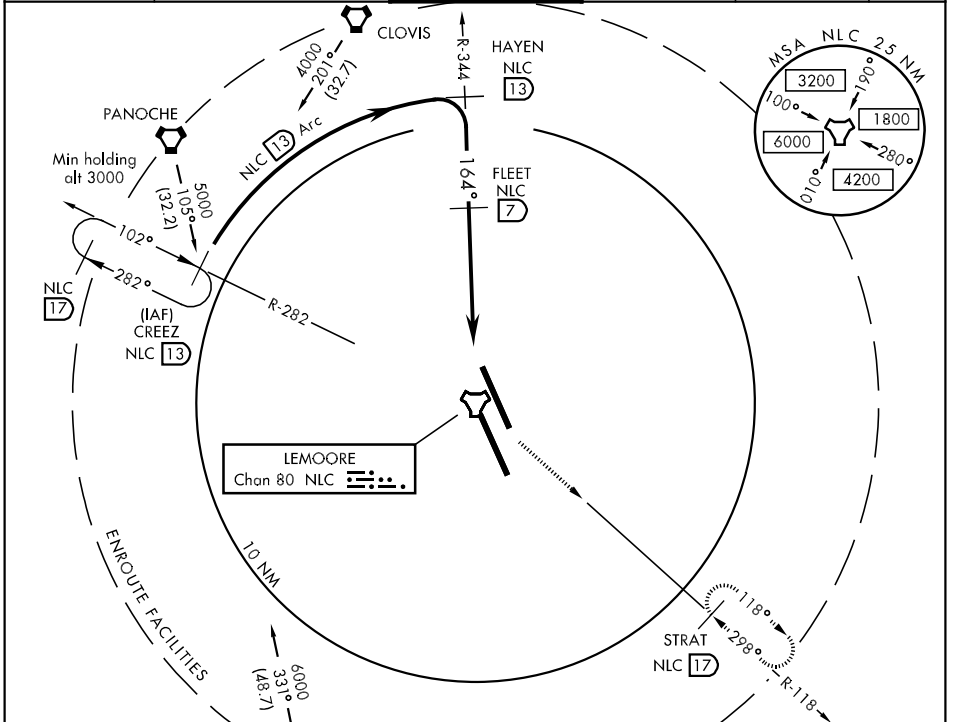
TACAN Chan 80	NLC 164°	APCH CRS 164°	Rwy ldg TDZE Arpt Elev 13,500 222 232
-------------------------	--------------------	-------------------------	---

AL-5067 [USN]

LEMOORE NAS (REEVES FIELD) (KNLC)

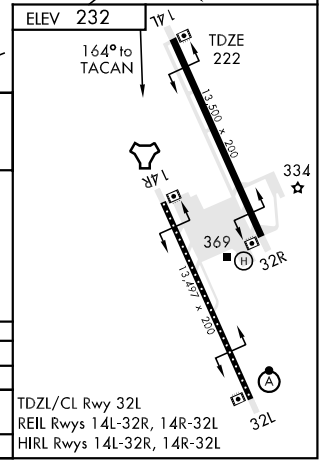
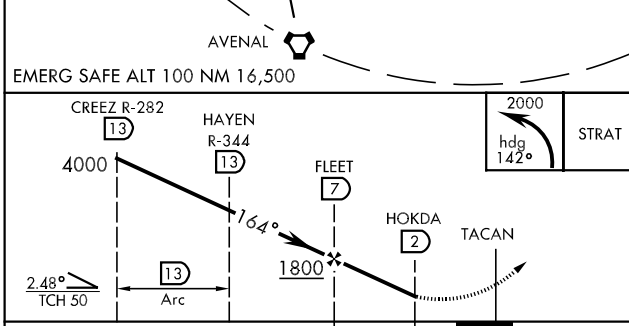
MISSED APPROACH: Climbing left turn to 2000 via heading 142°, intercept R-118 to STRAT and hold.

ATIS ★ 121.575 267.6	LEMOORE APP CON N 124.1 S 118.15 286.0	LEMOORE TOWER ★ 128.3 340.2	GND CON 121.65 305.2	CLNC DEL 124.1 380.8	ASR/PAR
--------------------------------	---	---------------------------------------	--------------------------------	--------------------------------	---------



SW-2, 22 OCT 2009 to 19 NOV 2009

SW-2, 22 OCT 2009 to 19 NOV 2009



CATEGORY	A	B	C	D
S-14L	520-1	298	(300-1)	
CIRCLING	680-1 448 (500-1)	700-1 468 (500-1)	700-1½ 468 (500-1½)	800-2 568 (600-2)
S-PAR 14L	322-½	100	(100-½)	GS 3.0°

TDZL/CL Rwy 32L
REIL Rwys 14L-32R, 14R-32L
HIRL Rwys 14L-32R, 14R-32L