

LEMOORE, CALIFORNIA

# RNAV (GPS) RWY 32R

APCH CRS	Rwy Idg	13,500
322°	TDZE	225
	Arpt Elev	232

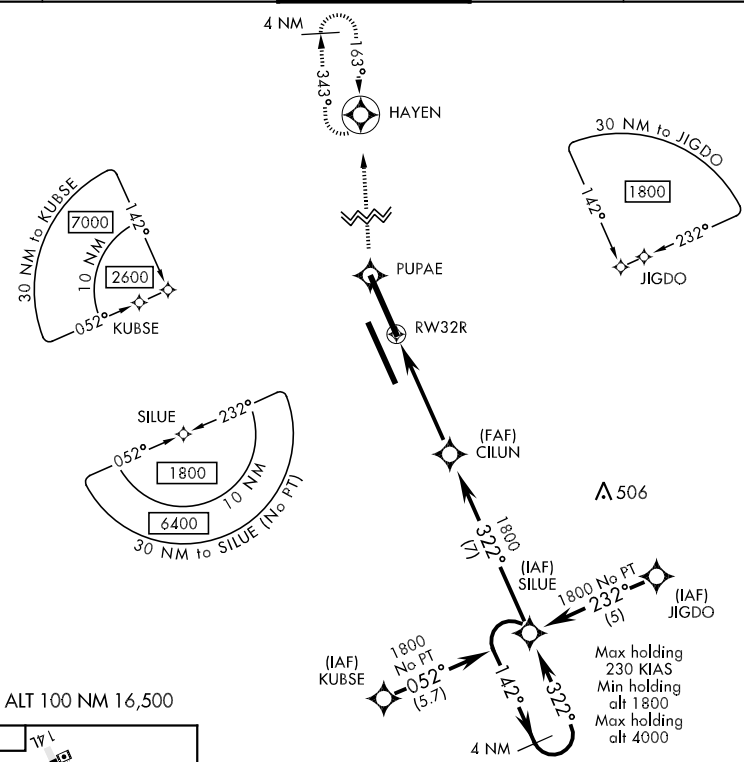
AL-5067 [USN]

LEMOORE NAS (REEVES FLD) (KNLC)

**▼** DME/DME RNP-0.3 NA  
Baro VNAV NA below - 15.46°C (4.17°F)

MISSED APPROACH: Climb to 2000 direct PUPAE, then via track 343° to HAYEN and hold.

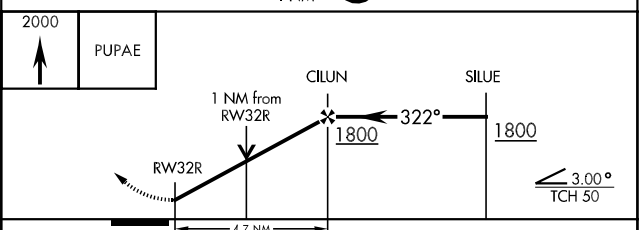
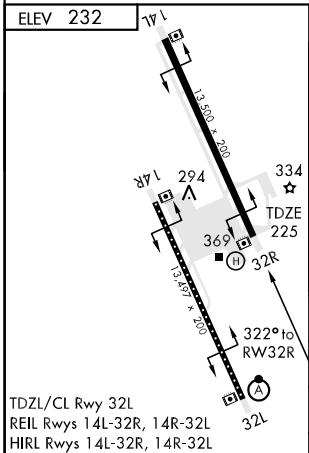
ATIS ★	LEMOORE APP CON	LEMOORE TOWER ★	GND CON	CLNC DEL	ASR/PAR
121.575 267.6	N 124.1 S 118.15 286.0	128.3 360.2	121.65 305.2	124.1 380.8	



SW-2, 22 OCT 2009 to 19 NOV 2009

SW-2, 22 OCT 2009 to 19 NOV 2009

EMER SAFE ALT 100 NM 16,500



CATEGORY	A	B	C	D
LNAV MDA	620/50	395	(400-1)	620/60 395 (400-1½)
LNAV/VNAV DA	620/60	395	(400-1½)	620-1½ 395 (400-1½)
CIRCLING	680-1¼ 448 (500-1¼)	700-1¼ 468 (500-1¼)	700-1½ 468 (500-1½)	800-2 568 (600-2)
S-PAR 32R	325/24 100 (100-½)			GS 3.00°

LEMOORE, CALIFORNIA  
Amdt 1 08101

36° 20'N-119° 57'W

LEMOORE NAS (REEVES FLD) (KNLC)

# RNAV (GPS) RWY 32R