

LEMOORE, CALIFORNIA

RNAV (GPS) RWY 32L

APCH CRS 322°	Rwy Idg 13,497
	TDZE 230
	Arpt Elev 232

AL-5067 [USN]

LEMOORE NAS (REEVES FLD) (KNLC)

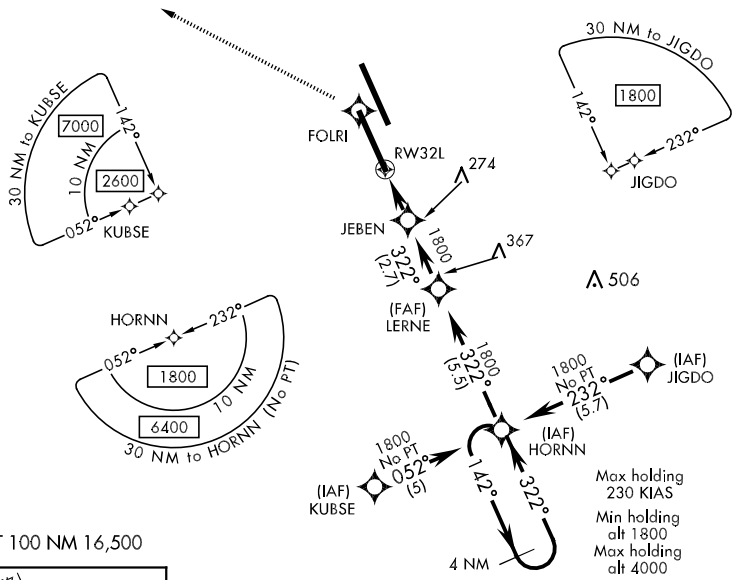
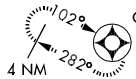
▼ * When ALS inop, increase CAT ABCD RVR to 50 and vis to 1 mile.
 ** When ALS inop, increase CAT ABCD RVR to 24 and vis to ½ mile.

ALSIF-2

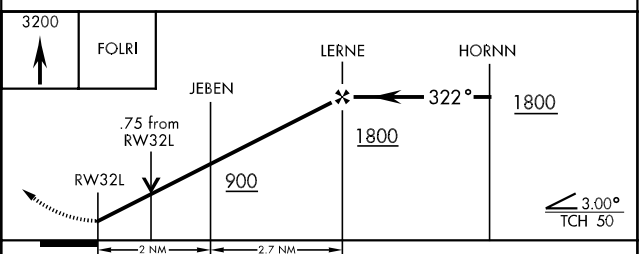
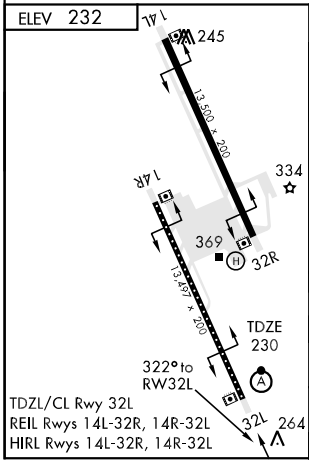
MISSED APPROACH: Climb to 3200 direct FOLRI, then via track 281° to CREEZ and hold.

ATIS ★ 121.575 267.6	LEMOORE APP CON N 124.1 S 118.15 286.0	LEMOORE TOWER ★ 128.3 340.2	GND CON 121.65 305.2	CLNC DEL 124.1 380.8	ASR/PAR
--------------------------------	--	---------------------------------------	--------------------------------	--------------------------------	---------

Baro VNAV NA below - 15.46°C (4.17°F).
 DME/DME RNP-0.3 NA



EMER SAFE ALT 100 NM 16,500



CATEGORY	A	B	C	D
LNAV MDA *	520/24 290	(300-½)	520/40 290	(300-¾)
LNAV/VNAV DA *	520/24 290	(300-½)	520/40 290	(300-¾)
CIRCLING	680-1 448 (500-1)	700-1 468 (500-1)	700-1½ 468 (500-1½)	800-2 568 (600-2)
S-PAR 32L **	330/16		100 (100-¼)	GS 3.00°

LEMOORE, CALIFORNIA
 Amdt 1 08101

36°20'N-119°57'W

LEMOORE NAS (REEVES FLD) (KNLC)

RNAV (GPS) RWY 32L

SW-2, 22 OCT 2009 to 19 NOV 2009

SW-2, 22 OCT 2009 to 19 NOV 2009