

LEMOORE, CALIFORNIA

RNAV (GPS) RWY 14R

APCH CRS	Rwy Idg	13,497
142°	TDZE	231
	Arpt Elev	232

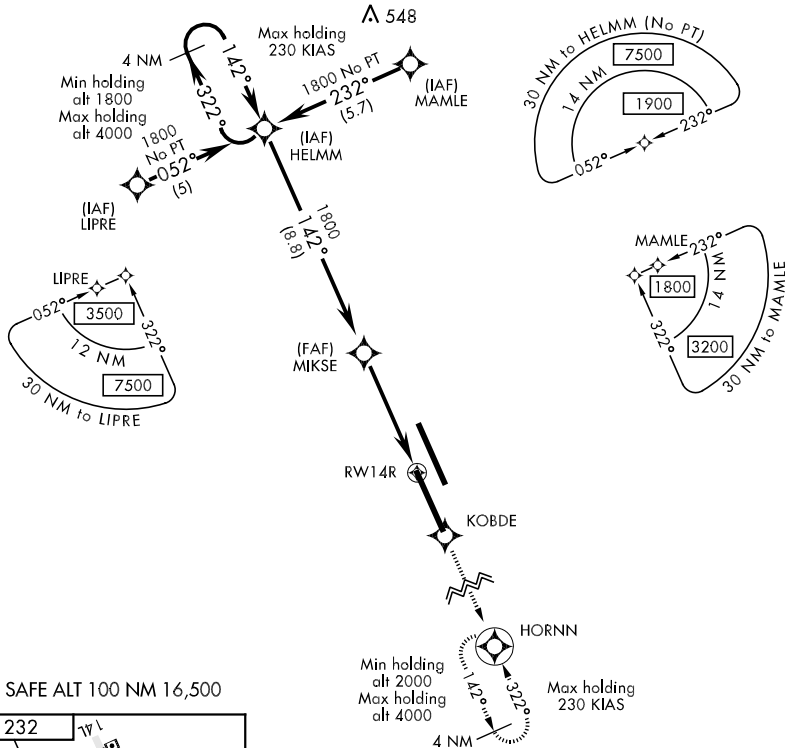
AL-5067 [USN]

LEMOORE NAS (REEVES FLD) (KNLC)

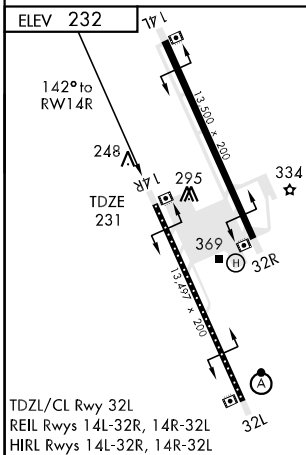
Baro VNAV NA below - 15.46°C (4.17°F).
DME/DME RNP-0.3 NA

MISSED APPROACH: Climb to 2000 direct KOBDE, then via track 142° to HORN and hold.

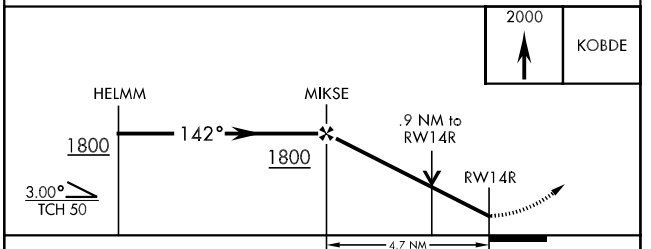
ATIS ★	LEMOORE APP CON	LEMOORE TOWER ★	GND CON	CLNC DEL	ASR/PAR
121.575 267.6	N 124.1 S 118.15 286.0	128.3 360.2	121.65 305.2	124.1 380.8	



EMER SAFE ALT 100 NM 16,500



TDZL/CL Rwy 32L
REIL Rwy 14L-32R, 14R-32L
HIRL Rwy 14L-32R, 14R-32L



CATEGORY	A	B	C	D
LNAV MDA	560-1	330	(400-1)	
LNAV/VNAV DA	500-1	270	(300-1)	
CIRCLING	680-1 448 (500-1)	700-1 468 (500-1)	700-1½ 468 (500-1½)	800-2 568 (600-2)
S-PAR 14R	331-½	100	(100-½)	GS 3.00°

LEMOORE, CALIFORNIA

36°20'N-119°57'W

LEMOORE NAS (REEVES FLD) (KNLC)

Amdt 2 08129

RNAV (GPS) RWY 14R

SW-2, 22 OCT 2009 to 19 NOV 2009

SW-2, 22 OCT 2009 to 19 NOV 2009