

LEMOORE, CALIFORNIA

RNAV (GPS) RWY 14L

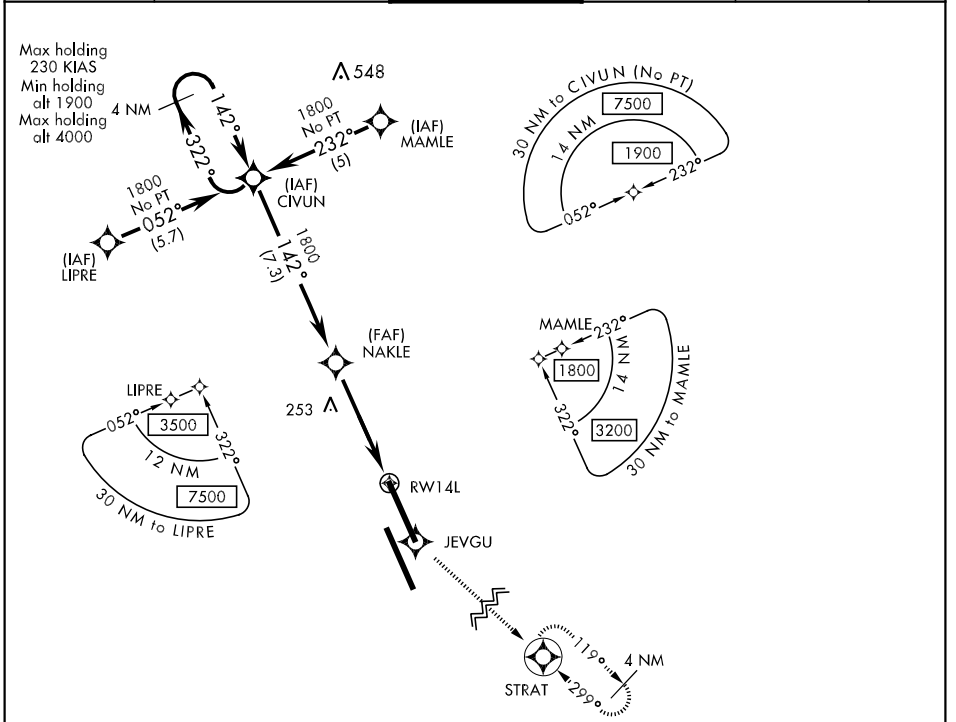
APCH CRS	Rwy ldg	13,500
142°	TDZE	222
	Arpt Elev	232

AL-5067 [USN]

LEMOORE NAS (REEVES FLD) (KNLC)

<p>▼ Baro VNAV NA below - 15.46°C (4.17°F).</p> <p>DME/DME RNP-0.3 NA</p>	<p>MISSED APPROACH: Climb to 2000 direct JEVGU, then via track 119° to STRAT and hold.</p>
---	--

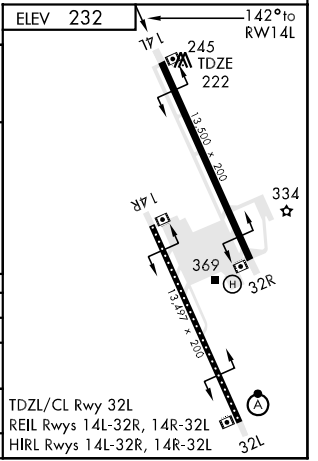
<p>ATIS ★</p> <p>121.575 267.6</p>	<p>LEMOORE APP CON</p> <p>N 124.1 S 118.15 286.0</p>	<p>LEMOORE TOWER ★</p> <p>128.3 340.2</p>	<p>GND CON</p> <p>121.65 305.2</p>	<p>CLNC DEL</p> <p>124.1 380.8</p>	<p>ASR/PAR</p>
------------------------------------	--	---	------------------------------------	------------------------------------	----------------



SW-2, 22 OCT 2009 to 19 NOV 2009

SW-2, 22 OCT 2009 to 19 NOV 2009

EMERG SAFE ALT 100 NM 16,500	ELEV 232		142° to RWY 14L
† 1900 min alt from holding	2000	JEVGU	
<p>CIVUN</p> <p>† 1800</p> <p>3.00° TCH 50</p>	<p>NAKLE</p> <p>1800</p>	<p>8 NM to RWY 14L</p>	<p>RWY 14L</p>
4.7 NM			
CATEGORY	A	B	C
LNAV MDA	520-1	298	(300-1)
LNAV/VNAV DA	520-1	298	(300-1)
CIRCLING	680-1 448 (500-1)	700-1 468 (500-1)	700-1½ 468 (500-1½)
S-PAR 14L	322-½	100	(100-½) GS 3.0°
<p>TDZL/CL Rwy 32L</p> <p>REIL Rwys 14L-32R, 14R-32L</p> <p>HIRL Rwys 14L-32R, 14R-32L</p>			



LEMOORE, CALIFORNIA
Amdt 2 08129

36°20'N-119°57'W

LEMOORE NAS (REEVES FLD) (KNLC)

RNAV (GPS) RWY 14L