

LEMOORE-SEVEN DEPARTURE (NLC7•NLC)

ATIS ★ 121.575 267.6
 CLNC DEL
 124.1 380.8
 GND CON
 121.65 305.2
 LEMOORE TOWER ★
 128.3 340.2
 (Rwy 14L, 32L)
 128.3 360.2
 (Rwy 14R, 32R)
 LEMOORE DEP CON
 124.1 318.8 (N)
 118.15 318.8 (S)

SHL-5067 [USN]

FALLON
 Chan 82 NFL
 L-9, H-3

COADALE
 117.7 OAL
 Chan 124
 L-9, H-3

FRIANT
 115.6 FRA
 Chan 103
 L-3, L-9, H-3

* MIZRE
 NLC R-022/49

PANOCHÉ
 112.6 PXN
 Chan 73
 L-3, H-3

SALINAS
 117.3 SNS
 Chan 120
 L-3, H-3

BIG SUR
 114.0 BSR
 Chan 87
 L-3, H-4

WADDE
 NLC R-246/23.6
 11,000

LEMOORE
 Chan 80 NLC

EOCIN
 NLC R-041/19.8
 15,000

* CETTA
 NLC R-058/42

* KIOTE
 NLC R-062/68

* HUNTE
 NLC R-243/65

* CORSE
 NLC R-243/99

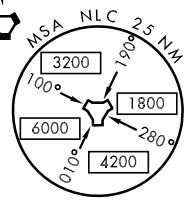
PASO ROBLES
 114.3 PRB
 Chan 90
 L-3, L-7, H-4

SHAFTER
 115.4 EHF
 Chan 101
 L-3, L-7, H-4

Chart not to scale

* Local military use only for Special Use Airspace entry.

EMERG SAFE ALT 100 NM 16,500



SW-2, 22 OCT 2009 to 19 NOV 2009

SW-2, 22 OCT 2009 to 19 NOV 2009

DEPARTURE ROUTE DESCRIPTION

TAKE-OFF RUNWAYS 32L/32R: Climb to 2000 via heading 322°. Expect radar vectors to join assigned transition route.

AVENAL TRANSITION (NLC7.AVE): From over WADDE via AVE R-313 to AVENAL VORTAC. Thence as filed. Cross WADDE at or below 11,000.

BIG SUR TRANSITION (NLC7.BSR): From over WADDE climb on heading 248° to 11,000 or as assigned for vectors to intercept BSR R-068 to BIG SUR VORTAC. Thence as filed. Cross WADDE at or below 11,000.

COADALE TRANSITION (NLC7.OAL): From over EOCIN climb on heading 029° to 15,000 or as assigned for radar vectors to intercept OAL R-209 to COADALE VORTAC. Thence as filed. Cross EOCIN at 15,000.

(Continued on next page)

LEMOORE-SEVEN DEPARTURE (NLC7•NLC)