

TACAN NLC Chan 80	APCH CRS 322°	Rwy Idg 13,497
		TDZE 230
		Arpt Elev 232

JAL-5067 [USN]

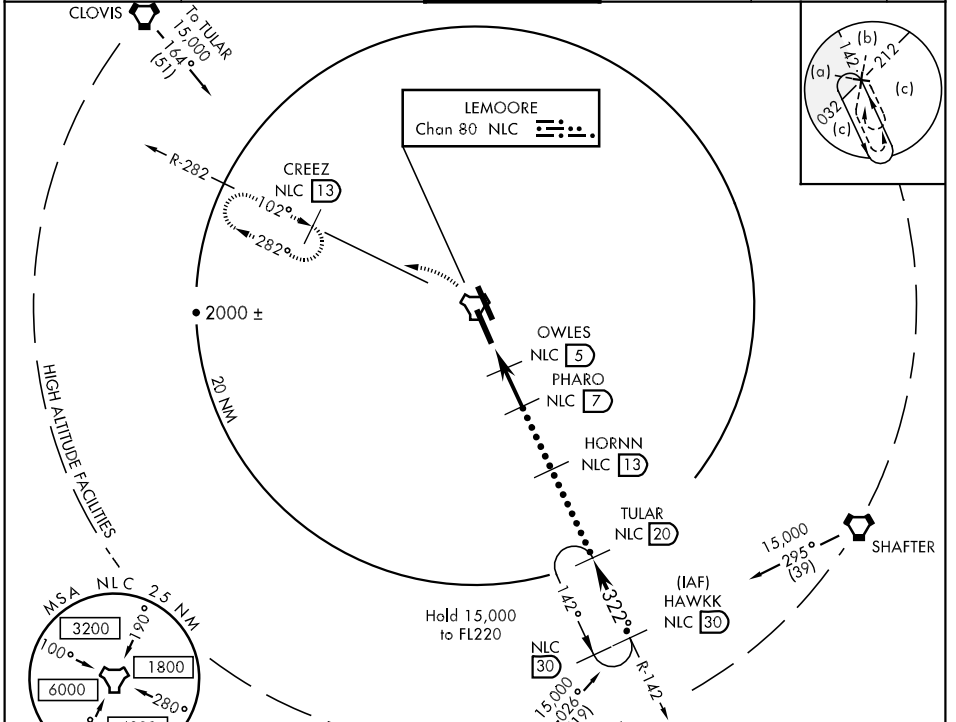
LEMOORE NAS (REEVES FIELD) (KNLC)

- * When ALS inop, increase CAT CDE RVR to 50 and vis to 1 mile.
- ** When ALS inop, increase CAT CDE RVR to 24 and vis to 1/2 mile.



MISSED APPROACH: Climb to 3000 via R-142 to NLC TACAN, then via R-282 to CREEZ and hold.

ATIS ★ 121.575 267.6	LEMOORE APP CON N 124.1 S 118.15 286.0	LEMOORE TOWER ★ 128.3 340.2	GND CON 121.65 305.2	CLNC DEL 124.1 380.8	ASR/ PAR
-------------------------	---	--------------------------------	-------------------------	-------------------------	-------------

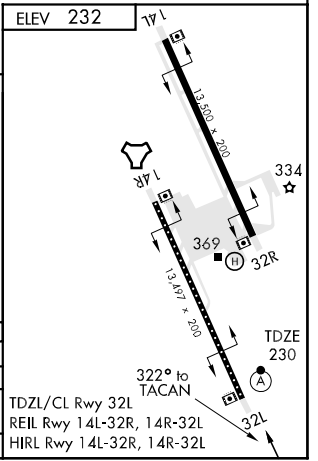


SW-2, 22 OCT 2009 to 19 NOV 2009

SW-2, 22 OCT 2009 to 19 NOV 2009

EMERG SAFE ALT 100 NM 16,500

Profile view showing altitudes and distances for various NLCs: TACAN (3000), SUZIQ (3.4), OWLES (3.5), PHARO (7), HORNN (13), TULAR (20), and HAWKK (30). Distances are marked as 1.6 NM and 2 NM. Altitudes are 1080, 1800, 3000, and 15,000 ft. A 3.37° TCH 50 is indicated. A note says '† Or as assigned'.



CATEGORY	C	D	E
S-32L *	540/40	310	(400-34)
CIRCLING	700-1 1/2 468 (500-1 1/2)	800-2	568 (600-2)
S-PAR 32L**	330/16	100	(100-1/4) GS 3.0°