

MARION, INDIANA

AL-5064 (FAA)

VOR/DME MZZ	APP CRS	Rwy Idg	6000
108.6	034°	TDZE	859
Chan 23		Apt Elev	859

# VOR RWY 4

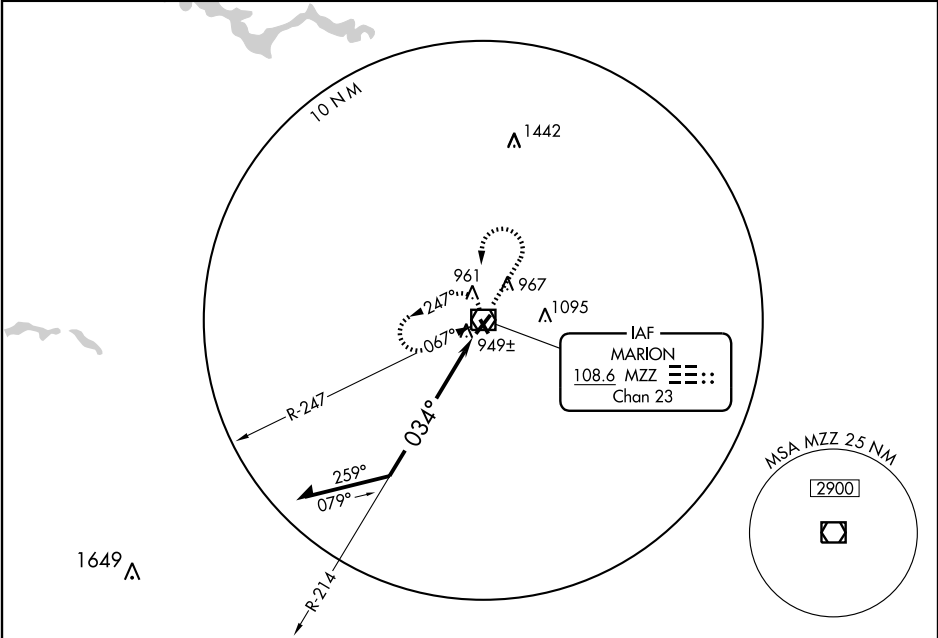
MARION MUNI (MZZ)

**▼** If local altimeter setting not received, use Fort Wayne Intl altimeter setting, and increase all MDAs 100 feet.  
**▲ NA** For inoperative MALSR, increase Cat D visibility to 1¼.

**MALSR**

**MISSED APPROACH:** Climb to 2500 then left turn direct MZZ VOR/DME and hold.

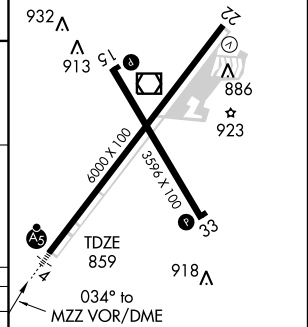
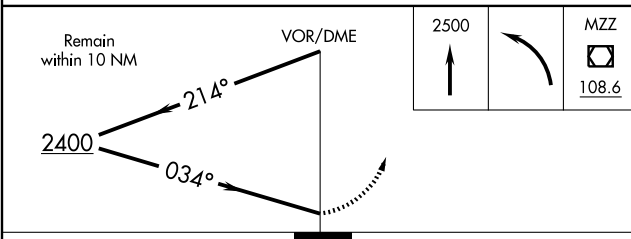
AWOS-3 <b>108.6</b>	GRISSOM APP CON ★ <b>121.05 379.3</b>	CLNC DEL <b>120.0</b>	UNICOM <b>122.7 (CTAF) 0</b>
------------------------	--	--------------------------	---------------------------------



EC-2, 22 OCT 2009 to 19 NOV 2009

EC-2, 22 OCT 2009 to 19 NOV 2009

ELEV 859	933 ▲
HIRL Rwy 4-22 0	909 ▲
MIRL Rwy 15-33 0	▲ 916
REIL Rws 15, 22, and 33 0	



CATEGORY	A	B	C	D
S-4	1260-½ 401 (500-½)		1260-¾ 401 (500-¾)	1260-1 401 (500-1)
CIRCLING	1280-1 421 (500-1)	1320-1 461 (500-1)	1320-1½ 461 (500-1½)	1420-2 561 (600-2)

Knots	60	90	120	150	180
Min:Sec					

MARION, INDIANA  
 Amdt 13 06327

40°29'N - 85°41'W

# MARION MUNI (MZZ)

## VOR RWY 4