

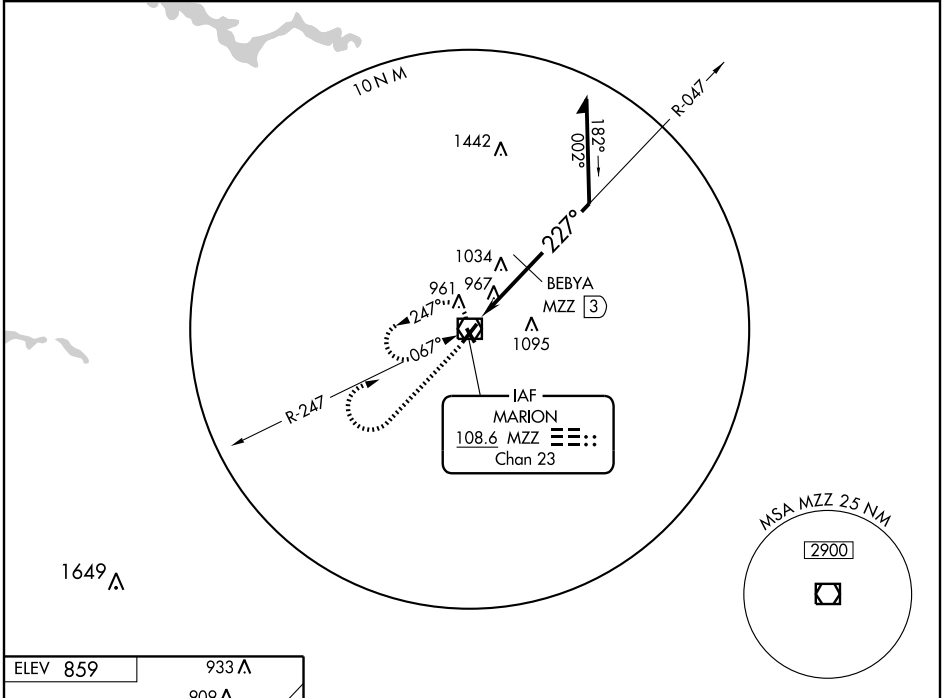
VOR/DME MZZ <b>108.6</b> Chan 23	APP CRS <b>227°</b>	Rwy Idg TDZE Apt Elev	<b>6000</b> <b>859</b> <b>859</b>
--	------------------------	-----------------------------	---

**VOR RWY 22**  
MARION MUNI (MZZ)

**▽** If local altimeter setting not received, use Fort Wayne  
**△** NA Intl altimeter setting and increase all MDAs 100 feet.

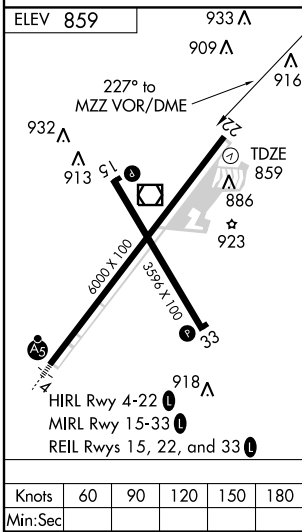
MISSED APPROACH: Climb to 2500 then right turn direct MZZ VOR/DME and hold.

AWOS-3 <b>108.6</b>	GRISSEM APP CON * <b>121.05 379.3</b>	CLNC DEL <b>120.0</b>	UNICOM <b>122.7 (CTAF) 0</b>
------------------------	--	--------------------------	---------------------------------



EC-2, 22 OCT 2009 to 19 NOV 2009

EC-2, 22 OCT 2009 to 19 NOV 2009



ELEV 859	933 △	2500	MZZ	VOR/DME	Remain within 10 NM
909 △	916 △	↑	□	047°	2500
227° to MZZ VOR/DME	TDZE 859	↷	108.6	BEBYA MZZ 3	227°
932 △	886 △			*1500	
913 △	923 ☆			0.3	2.7 NM
6000 X 100	3595 X 100				
918 △					
HIRL Rwy 4-22					
MIRL Rwy 15-33					
REIL Rwy 15, 22, and 33					

\*1600 when using Fort Wayne Intl altimeter setting.

CATEGORY	A	B	C	D
S-22	1500-1	641 (700-1)	1500-1¾ 641 (700-1¾)	1500-2 641 (700-2)
CIRCLING	1500-1	641 (700-1)	1500-1¾ 641 (700-1¾)	1500-2 641 (700-2)
BEBYA FIX MINIMUMS				
S-22	1340-1	481 (500-1)	1340-1¼ 481 (500-1¼)	1340-1½ 481 (500-1½)
CIRCLING	1340-1	481 (500-1)	1340-1½ 481 (500-1½)	1420-2 561 (600-2)