

MARION, INDIANA

AL-5064 (FAA)

VOR/DME MZZ 108.6 Chan 23	APP CRS 143°	Rwy Idg 3596 TDZE 858 Apt Elev 859
---	------------------------	---

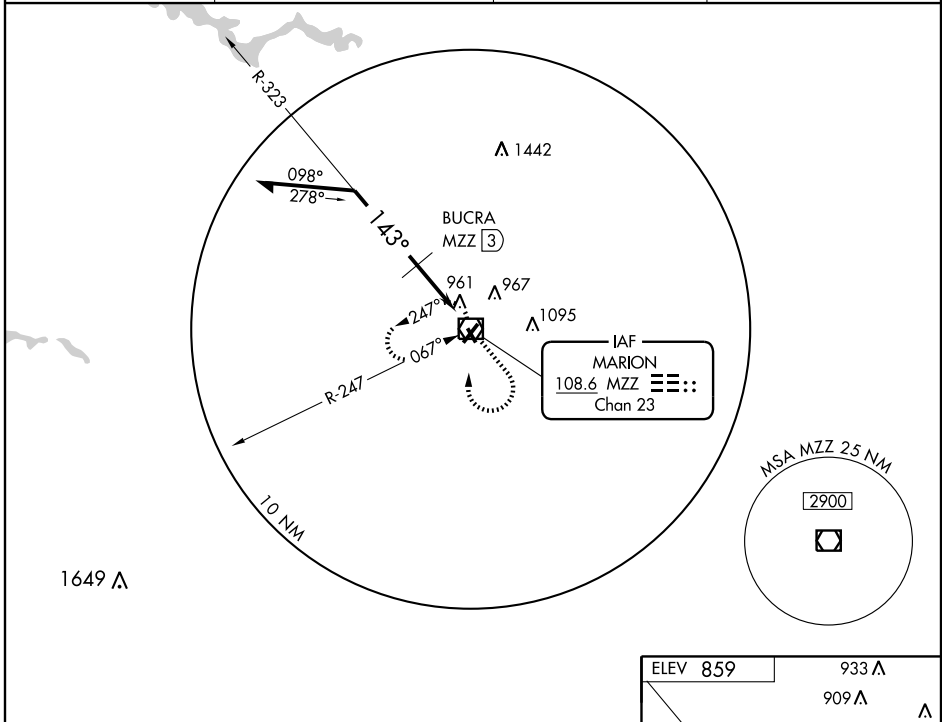
VOR RWY 15

MARION MUNI (MZZ)

NA If local altimeter setting not received, use Fort Wayne Intl altimeter setting and increase all MDAs 100 feet.

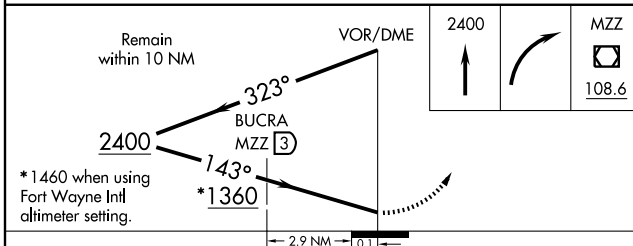
MISSED APPROACH: Climb to 2400 then right turn direct MZZ VOR/DME and hold.

AWOS-3 108.6	GRISSOM APP CON * 121.05 379.3	CLNC DEL 120.0	UNICOM 122.7 (CTAF) 0
------------------------	--	--------------------------	---------------------------------

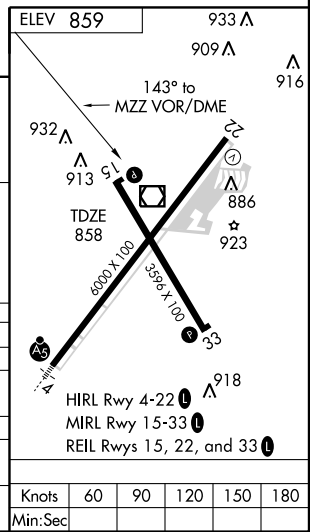


EC-2, 22 OCT 2009 to 19 NOV 2009

EC-2, 22 OCT 2009 to 19 NOV 2009



CATEGORY	A	B	C	D
S-15	1360-1	502 (600-1)	1360-1½	502 (600-1½)
CIRCLING	1360-1	501 (600-1)	1360-1½ 501 (600-1½)	1420-2 561 (600-2)
BUCRA FIX MINIMUMS				
S-15	1220-1 362 (400-1)		1220-1¼ 362 (400-1¼)	
CIRCLING	1280-1 421 (500-1)	1320-1 461 (500-1)	1320-1½ 461 (500-1½)	1420-2 561 (600-2)



MARION, INDIANA
Amdt 10 06327

40°29'N - 85°41'W

MARION MUNI (MZZ)

VOR RWY 15