

RNAV (GPS) RWY 4

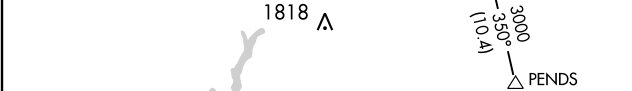
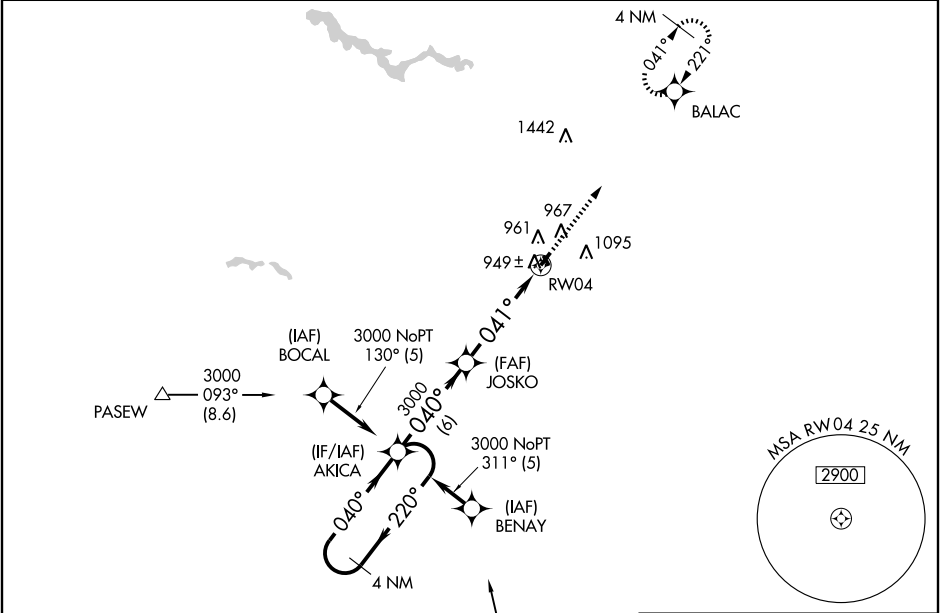
MARION MUNI (MZZ)

WAAS CH 60906 W04A	APP CRS 041°	Rwy Idg TDZE Apt Elev	6000 859 859
--	------------------------	-----------------------------	---

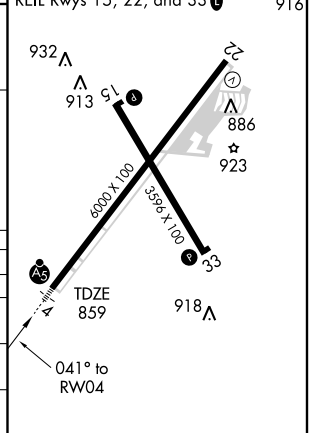
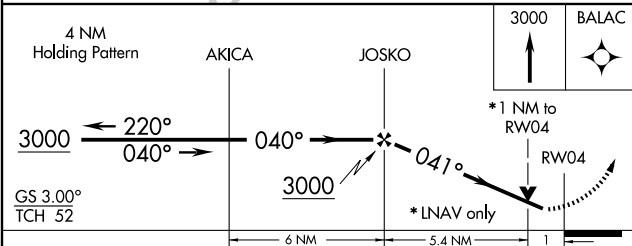
NA If local altimeter setting not received, use Fort Wayne Intl altimeter setting, and increase all DA/MDAs 100 feet. Inoperative table does not apply to LPV. For inoperative MALSR increase LNAV Cat A/B/C visibilities to 1 and Cat D to 1/4. DME/DME RNP-0.3 NA. Baro VNAV NA below -16°C (4°F). VDP and Baro VNAV NA when using Fort Wayne Intl altimeter setting. When VGSJ inop circling Rwy 15, 33 NA at night.

MALSR
MISSED APPROACH:
Climb to 3000 direct
BALAC and hold.

AWOS-3 108.6	GRISSOM APP CON ★ 121.05 379.3	CLNC DEL 120.0	UNICOM 122.7 (CTAF)
------------------------	--	--------------------------	-------------------------------



ELEV 859	933 Δ
HIRL Rwy 4-22 Δ	909 Δ
MIRL Rwy 15-33 Δ	916 Δ
REIL Rwy 15, 22, and 33 Δ	



CATEGORY	A	B	C	D
LPV DA		1110-3/4	251 (300-3/4)	
LNAV/VNAV DA		1220-3/4	361 (400-3/4)	
LNAV MDA	1240-3/4	381 (400-3/4)		1240-1 381 (400-1)
CIRCLING	1280-1/4 421 (500-1/4)	1320-1/4 461 (500-1/4)	1320-1/2 461 (500-1/2)	1420-2 561 (600-2)

EC-2, 22 OCT 2009 to 19 NOV 2009

EC-2, 22 OCT 2009 to 19 NOV 2009