

ILS or LOC RWY 4

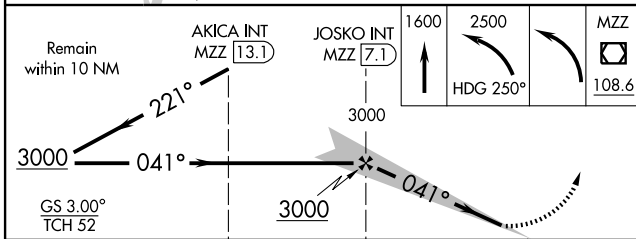
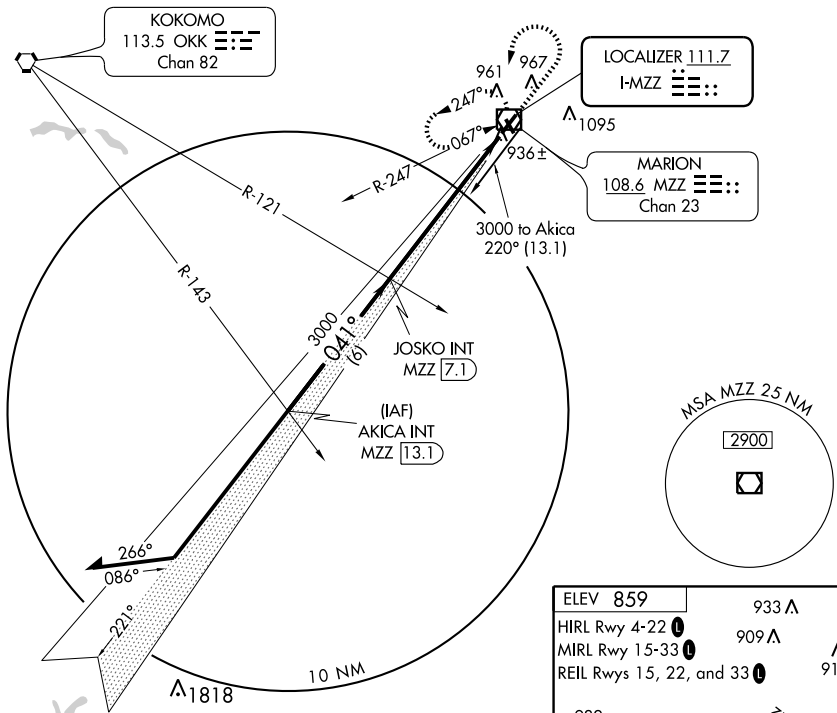
MARION MUNI (MZZ)

LOC I-MZZ 111.7	APP CRS 041°	Rwy Idg 6000
		TDZE 859
		Apt Elev 859

▽ If local altimeter setting not received, use Fort Wayne Intl altimeter setting, and increase all DH/MDAs 100 feet.
△NA For inoperative MALSRS increase S-LOC 4 Cat D visibility to 1.

MALSRS
 MISSED APPROACH: Climb to 1600, then climbing left turn to 2500 via heading 250°, then left turn direct MZZ VOR/DME and hold.

AWOS-3 108.6	GRISSOM APP CON ★ 121.05 379.3	CLNC DEL 120.0	UNICOM 122.7 (CTAF) 0
------------------------	--	--------------------------	---------------------------------



ELEV 859	933 Δ
HIRL Rwy 4-22 0	909 Δ
MIRL Rwy 15-33 0	916 Δ
REIL Rws 15, 22, and 33 0	

932 Δ

913 Δ

918 Δ

886 Δ

923 ★

8000 x 100

3586 x 100

TDZE 859

041° 6.4 NM from FAF

FAF to MAP 6.4 NM

Knots	60	90	120	150	180
Min:Sec	6:24	4:16	3:12	2:34	2:08

CATEGORY	A	B	C	D
S-ILS 4	1063-½		204 (300-½)	
S-LOC 4	1200-½	341 (400-½)		1200-¾ 341 (400-¾)
CIRCLING	1280-1 421 (500-1)	1320-1 461 (500-1)	1320-1½ 461 (500-½)	1420-2 561 (600-2)

EC-2, 22 OCT 2009 to 19 NOV 2009

EC-2, 22 OCT 2009 to 19 NOV 2009