

PORTLAND, OREGON

AL-5063 (FAA)

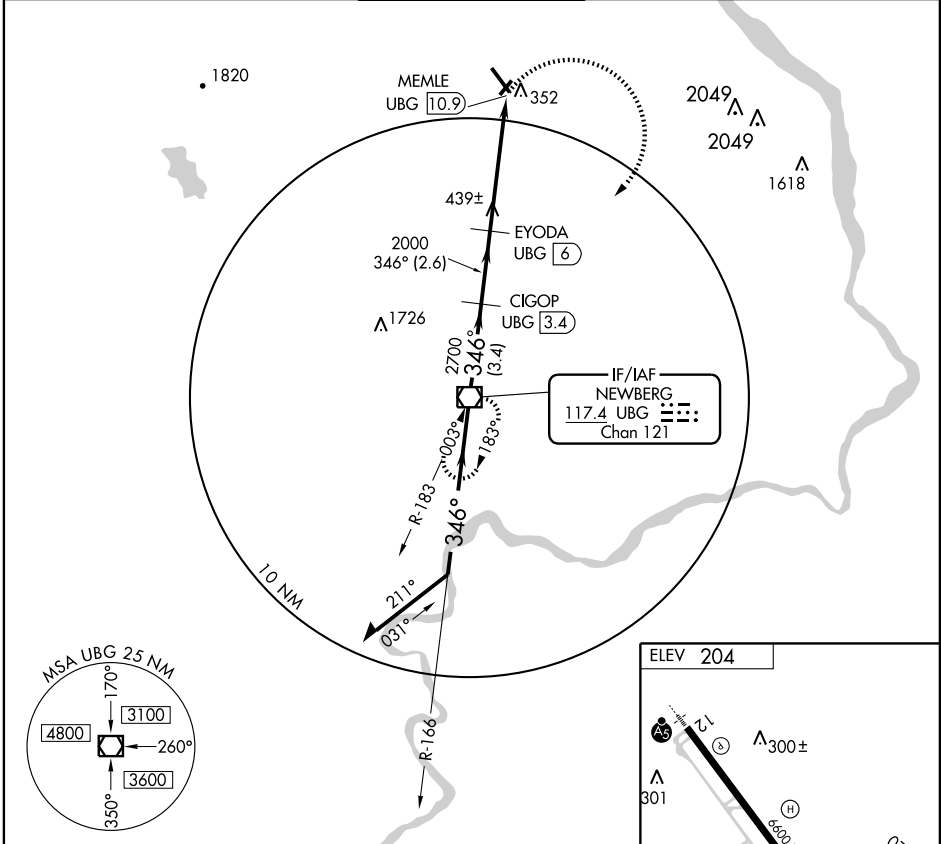
VOR/DME UBG <b>117.4</b> Chan 121	APP CRS <b>346°</b>	Rwy Idg TDZE Apt Elev	<b>N/A</b> <b>N/A</b> <b>204</b>
---	------------------------	-----------------------------	--

# VOR/DME-C

PORTLAND-HILLSBORO (HIO)

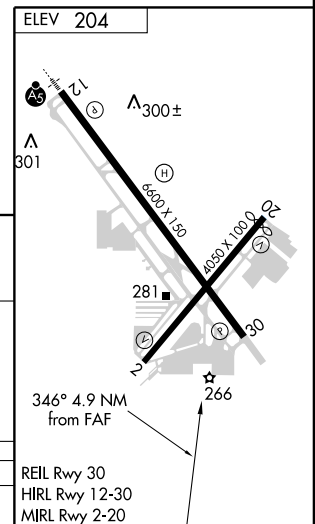
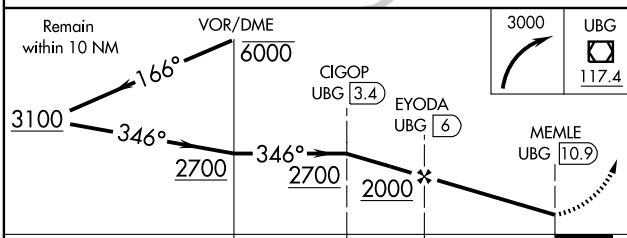
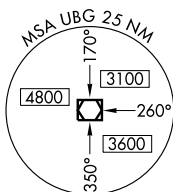
**▽** MISSED APPROACH: Climbing right turn to 3000 direct UBG VOR/DME and hold.

ATIS <b>127.65</b>	PORTLAND APP CON <b>126.0 284.6</b>	<b>HILLSBORO TOWER*</b> <b>119.3 (CTAF) 239.3</b>	GND CON <b>121.7</b>	UNICOM <b>122.95</b>
-----------------------	--	--	-------------------------	-------------------------



NW-1, 22 OCT 2009 to 19 NOV 2009

NW-1, 22 OCT 2009 to 19 NOV 2009



CATEGORY	A	B	C	D
CIRCLING	700-1	496 (500-1)	700-1½ 496 (500-1½)	760-2 556 (600-2)

PORTLAND, OREGON  
Orig 09183

45°32'N-122°57'W

PORTLAND-HILLSBORO (HIO)  
**VOR/DME-C**