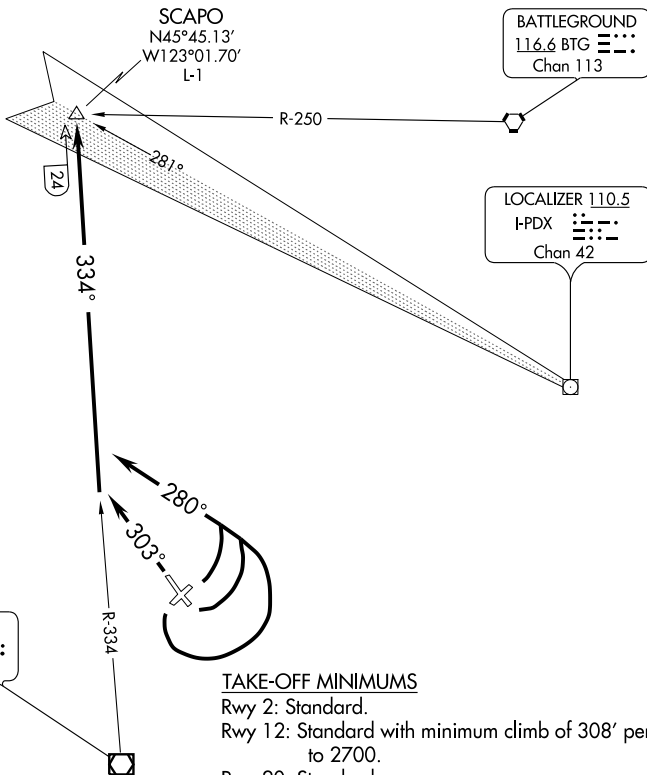


# SCAPO FOUR DEPARTURE

SL-5063 (FAA)

PORTLAND-HILLSBORO (HIO)  
PORTLAND, OREGON

ATIS 127.65  
GND CON  
121.7  
HILLSBORO TOWER\*  
119.3 (CTAF) 239.3  
PORTLAND DEP CON  
126.0 284.6



### TAKE-OFF MINIMUMS

- Rwy 2: Standard.
- Rwy 12: Standard with minimum climb of 308' per NM to 2700.
- Rwy 20: Standard.
- Rwy 30: 200-1¼ or standard with minimum climb of 223' per NM to 2700.

### TAKE-OFF OBSTACLE NOTES

- Rwy 2: Multiple roads beginning 246' from DER, 3' right of centerline, up to 15' AGL/220' MSL.
- Rwy 12: Multiple trees beginning 1,842' from DER, 222' left of centerline, up to 125' AGL/324' MSL.  
Multiple trees beginning 3,629' from DER, 46' right of centerline, up to 143' AGL/332' MSL.
- Rwy 20: Multiple trees and pole beginning 967' from DER, 118' left of centerline, up to 93' AGL/292' MSL.  
Vent on hangar 63' from DER, 428' left of centerline, 26' AGL/225' MSL.  
Multiple trees and antenna on bldg beginning 965' from DER, 449' right of centerline, up to 74' AGL/273' MSL.
- Rwy 30: Multiple trees beginning 1,664' from DER, 623' right of centerline, up to 194' AGL/363' MSL.  
Pole 702' from DER, 603' left of centerline, 26' AGL/215' MSL.



### DEPARTURE ROUTE DESCRIPTION

- TAKE-OFF RUNWAYS 2, 12, AND 20: Turn left heading 280°, thence . . .
- TAKE-OFF RUNWAY 30: Climb via heading 303°, thence . . .
- . . . Intercept and proceed via UBG R-334 to SCAPO INT, thence via (assigned route).

# SCAPO FOUR DEPARTURE

NW-1, 22 OCT 2009 to 19 NOV 2009

NW-1, 22 OCT 2009 to 19 NOV 2009