

# RNAV (GPS) RWY 9

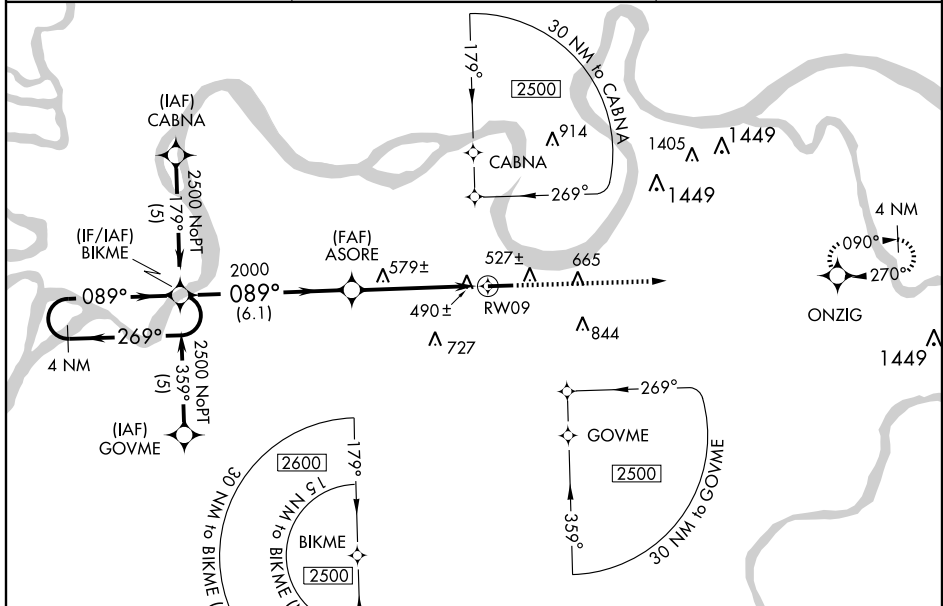
HENDERSON CITY-COUNTY (E.H.R.)

WAAS CH <b>97709</b> <b>W09A</b>	APP CRS <b>089°</b>	Rwy Idg <b>5504</b> TDZE <b>385</b> Apt Elev <b>387</b>
----------------------------------------	------------------------	---------------------------------------------------------------

**▼** DME/DME RNP-0.3 NA. For uncompensated Baro-VNAV systems, LNAV/VNAV NA below -15°C (5°F) or above 48°C (118°F). Visibility reduction by helicopters NA. Baro-VNAV and VDP NA when using Evansville altimeter setting. When local altimeter setting not received, use Evansville altimeter setting and increase all DA 41 feet and all MDA 60 feet and LPV all Cats, LNAV/VNAV all Cats and LNAV Cats C/D visibilities ¼ mile.

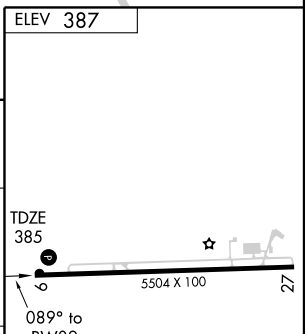
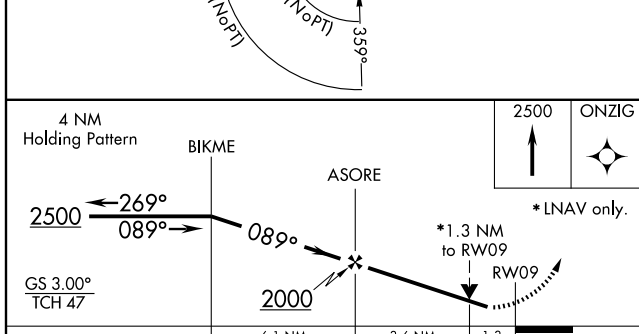
**MISSED APPROACH:** Climb to 2500 direct ONZIG and hold.

AWOS-3 <b>128.175</b>	EVANSVILLE APP CON ★ <b>126.4 257.8</b>	UNICOM <b>122.8 (CTAF)</b>
--------------------------	--------------------------------------------	-------------------------------



SE-1, 22 OCT 2009 to 19 NOV 2009

SE-1, 22 OCT 2009 to 19 NOV 2009



CATEGORY	A	B	C	D
LPV DA	694-1 309 (400-1)			
LNAV/VNAV DA	774-1¼ 389 (400-1¼)			
LNAV MDA	840-1	455 (500-1)	840-1¼ 455 (500-1¼)	840-1½ 455 (500-1½)
CIRCLING	880-1	493 (500-1)	880-1½ 493 (500-1½)	940-2 553 (600-2)

REIL Rwy 9 and 27 **①**  
MIRL Rwy 9-27 **①**