

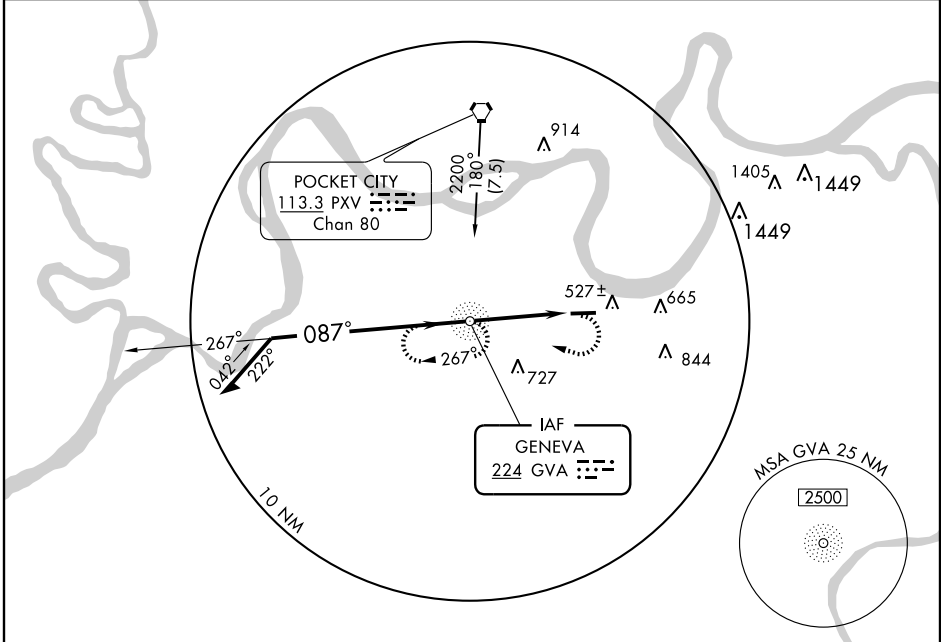
NDB RWY 9
HENDERSON CITY-COUNTY (E.H.R.)

NDB GVA 224	APP CRS 087°	Rwy Idg 5504
		TDZE 386
		Apt Elev 386

NA If local altimeter setting not received, use Evansville altimeter setting and increase all MDA's 80 feet.

MISSED APPROACH: Climbing right turn to 2200 direct GVA NDB and hold.

AWOS-3 128.175	EVANSVILLE APP CON ★ 126.4 257.8	UNICOM 122.8 (CTAF) 0
--------------------------	--	--

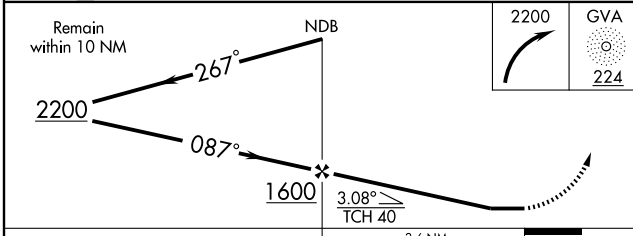
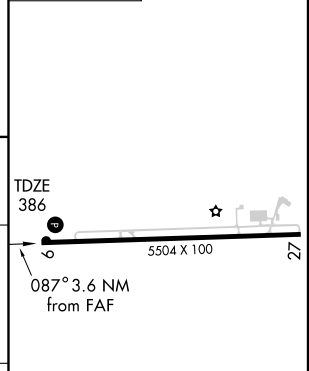


SE-1, 22 OCT 2009 to 19 NOV 2009

SE-1, 22 OCT 2009 to 19 NOV 2009



ELEV 386



CATEGORY	A	B	C	D
S-9	900-1 514 (600-1)		900-1½ 514 (600-1½)	900-1¾ 514 (600-1¾)
CIRCLING	900-1 514 (600-1)		900-1½ 514 (600-1½)	940-2 554 (600-2)

REIL Rwy 9 and 27 **0**
MIRL Rwy 9-27 **0**

FAF to MAP 3.6 NM

Knots	60	90	120	150	180
Min:Sec	3:36	2:24	1:48	1:26	1:12