

RNAV (GPS) RWY 29

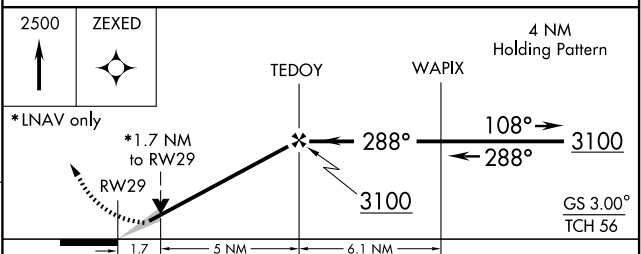
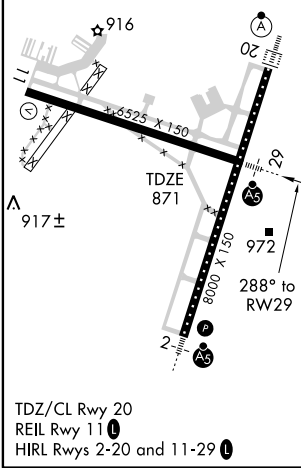
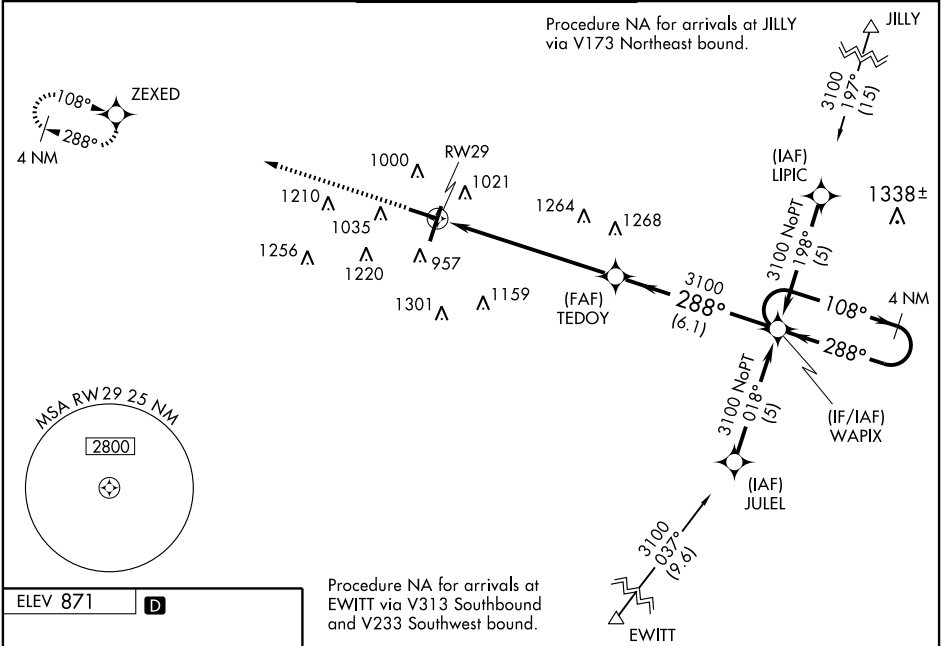
WAAS CH 60909 W29A	APP CRS 288°	Rwy Idg TDZE 871 Apt Elev 871	6525 871 871
--	------------------------	---	---

▼ For uncompensated Baro-VNAV systems, LNAV/VNAV NA below -16°C (4°F) or above 47°C (116°F). When local altimeter setting not received, use Greater Peoria Rgnl altimeter setting and increase all DA 116 feet and all MDA 120 feet, increase LPV all Cats. visibility ¼ mile, LNAV/VNAV all Cats., LNAV Cats. C and D and Circling Cats. C and D visibility ½ mile. Baro-VNAV and VDP NA when using Greater Peoria Rgnl altimeter setting. For inoperative MALSRS when using Greater Peoria Rgnl altimeter setting increase LPV visibility, all Cats, to RVR 5000. DME/DME RNP-0.3 NA.

MALSRS

MISSED APPROACH:
Climb to 2500 direct
ZEXED and hold.

ATIS 135.35	PEORIA APP CON 128.725 256.9	BLOOMINGTON TOWER * 124.6 (CTAF) 269.575	GND CON 121.65	UNICOM 122.95
-----------------------	--	---	--------------------------	-------------------------



CATEGORY	A	B	C	D
LPV DA		1121/24	250 (300-½)	
LNAV/VNAV DA		1304/50	433 (500-1)	
LNAV MDA	1460/24	589 (600-½)	1460/50 589 (600-1)	1460/60 589 (600-1½)
CIRCLING	1460-1	589 (600-1)	1460-1½ 589 (600-1½)	1520-2 649 (700-2)

EC-3, 22 OCT 2009 to 19 NOV 2009

EC-3, 22 OCT 2009 to 19 NOV 2009