

RNAV (GPS) RWY 20

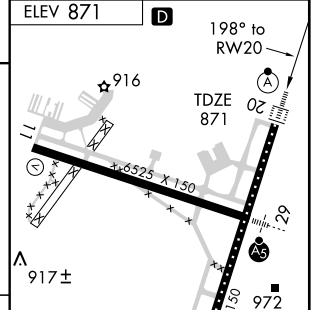
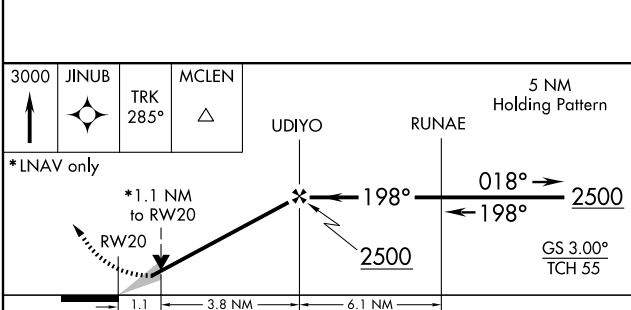
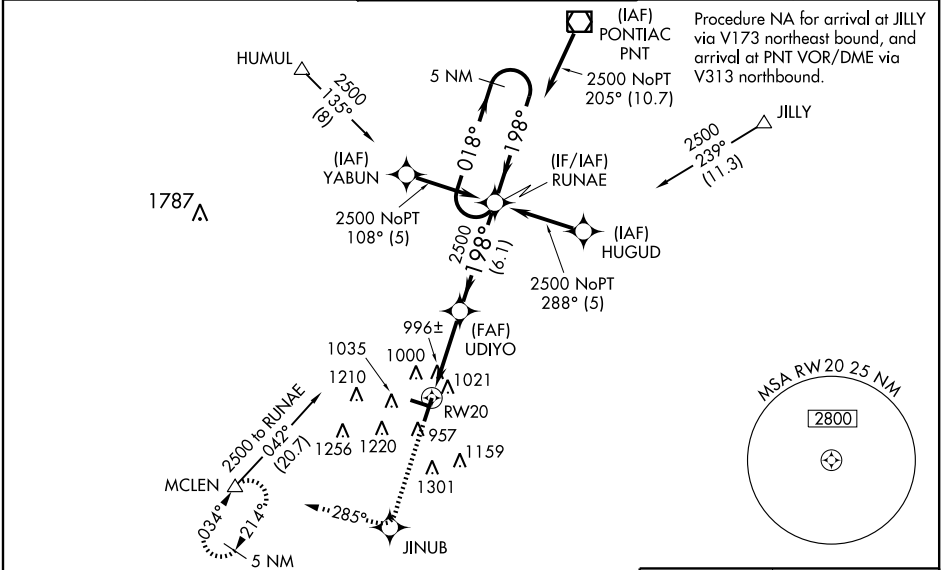
WAAS CH 99303 W20A	APP CRS 198°	Rwy Idg 8000 TDZE 871 Apt Elev 871
----------------------------------------	------------------------	---------------------------------------------------------------

⚠ Baro-VNAV NA when using Greater Peoria Rgnl altimeter setting. For uncompensated Baro-VNAV systems, LNAV/VNAV NA below -16°C (4°F) or above 47°C (116°F). VDP NA when using Greater Peoria Rgnl altimeter setting. When local altimeter setting not received, use Greater Peoria Rgnl altimeter setting and increase all DA 116 feet and all MDA 120 feet, increase LPV all Cats. visibility ¼ mile, and LNAV/VNAV all Cats., LNAV Cat. C and Circling Cat. D visibility ½ mile. For inoperative ALSF increase LNAV Cat. D visibility to RVR 6000. For inoperative ALSF when using Greater Peoria Rgnl altimeter setting increase LPV all Cats. visibility to RVR 5000. DME/DME RNP-0.3 NA.

ALSF-2
ⓐ

MISSED APPROACH:
Climb to 3000 direct JINUB and via 285° track to MCLEN and hold.

ATIS 135.35	PEORIA APP CON 128.725 256.9	BLOOMINGTON TOWER * 124.6 (CTAF) 269.575	GND CON 121.65	UNICOM 122.95
-----------------------	----------------------------------------	-----------------------------------------------------------	--------------------------	-------------------------



CATEGORY	A	B	C	D
LPV DA		1121/24	250 (300-½)	
LNAV/VNAV DA		1301/50	430 (500-1)	
LNAV MDA	1260/24	389 (400-½)		1260/50 389 (400-1)
CIRCLING	1340-1	469 (500-1)	1340-1½ 469 (500-1½)	1520-2 649 (700-2)

TDZ/CL Rwy 20
REIL Rwy 11 **ⓐ**
HIRL Rws 2-20 and 11-29 **ⓐ**

EC-3, 22 OCT 2009 to 19 NOV 2009

EC-3, 22 OCT 2009 to 19 NOV 2009