

BLOOMINGTON/NORMAL, ILLINOIS


AL-5058 (FAA)

BLOOMINGTON/
NORMAL /
CENTRAL IL RGNL ARPT AT BLOOMINGTON-NORMAL (BMI)

RNAV (GPS) RWY 2

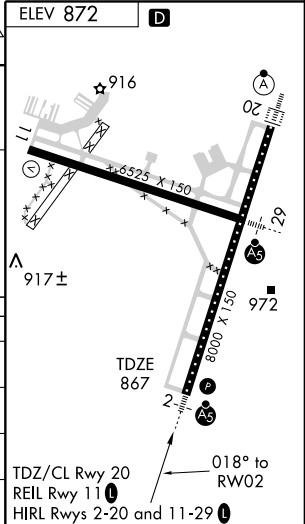
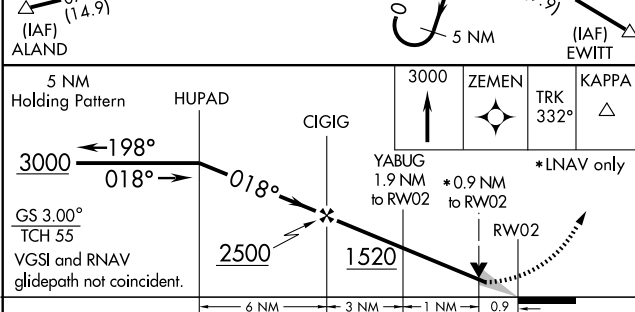
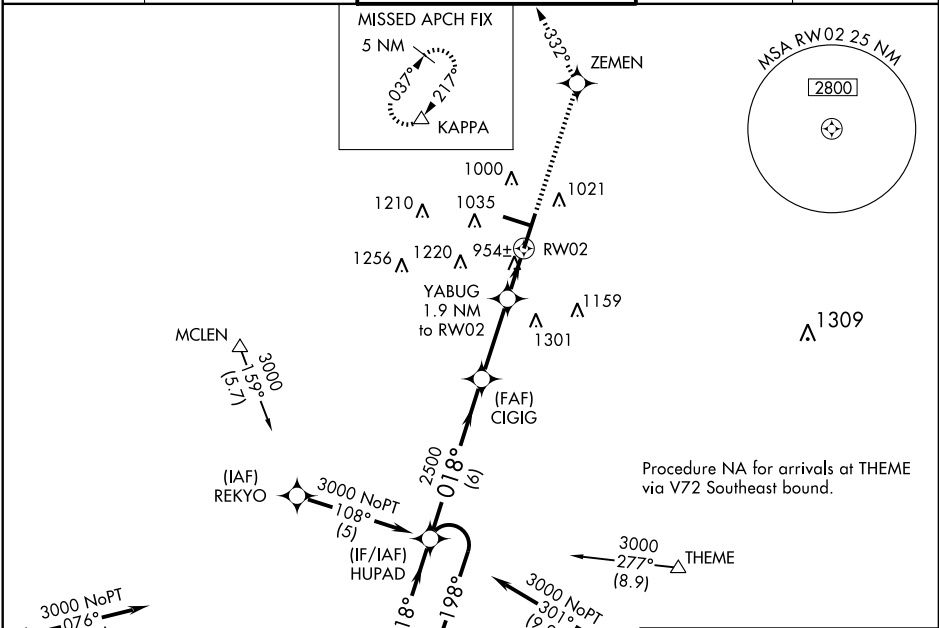
| | | | |
|--|------------------------|-----------------------------|---|
| WAAS CH 56303 W02A | APP CRS 018° | Rwy Idg TDZE Apt Elev | 8000 867 872 |
|--|------------------------|-----------------------------|---|

▼ If local altimeter setting not received, use Greater Peoria Rgnl altimeter setting and increase all DAs/MDAs 120 feet. For uncompensated Baro-VNAV systems, LNAV/VNAV NA below -16°C (4°F) or above 47°C (117°F). DME/DME RNP-0.3 NA. VDP and Baro-VNAV NA when using Greater Peoria Rgnl altimeter setting.

MALSR


MISSED APPROACH: Climb to 3000 direct ZEMEN then via 332° track to KAPPA and hold.

| | | | | |
|-----------------------|--|--|--------------------------|-------------------------|
| ATIS 135.35 | PEORIA APP CON 128.725 256.9 | BLOOMINGTON TOWER * 124.6 (CTAF) 269.575 | GND CON 121.65 | UNICOM 122.95 |
|-----------------------|--|--|--------------------------|-------------------------|



| CATEGORY | A | B | C | D |
|--------------|----------------------|---|---|---|
| LPV DA | 1214-1¼ | | 347 (400-1¼) | |
| LNAV/VNAV DA | 1251-1¼ | | 384 (400-1¼) | |
| LNAV MDA | 1220-1 353 (400-1) | | 1220-1¼ 353 (400-1¼) | |
| CIRCLING | 1340-1¼ 468 (500-1¼) | | 1340-1½ 1520-2 468 (500-1½) 648 (700-2) | |

BLOOMINGTON/NORMAL, ILLINOIS

Orig 09295

40°29'N - 88°55'W

CENTRAL IL RGNL ARPT AT BLOOMINGTON-NORMAL (BMI)
BLOOMINGTON/NORMAL /
RNAV (GPS) RWY 2

EC-3, 22 OCT 2009 to 19 NOV 2009

EC-3, 22 OCT 2009 to 19 NOV 2009