

RNAV (GPS) RWY 11

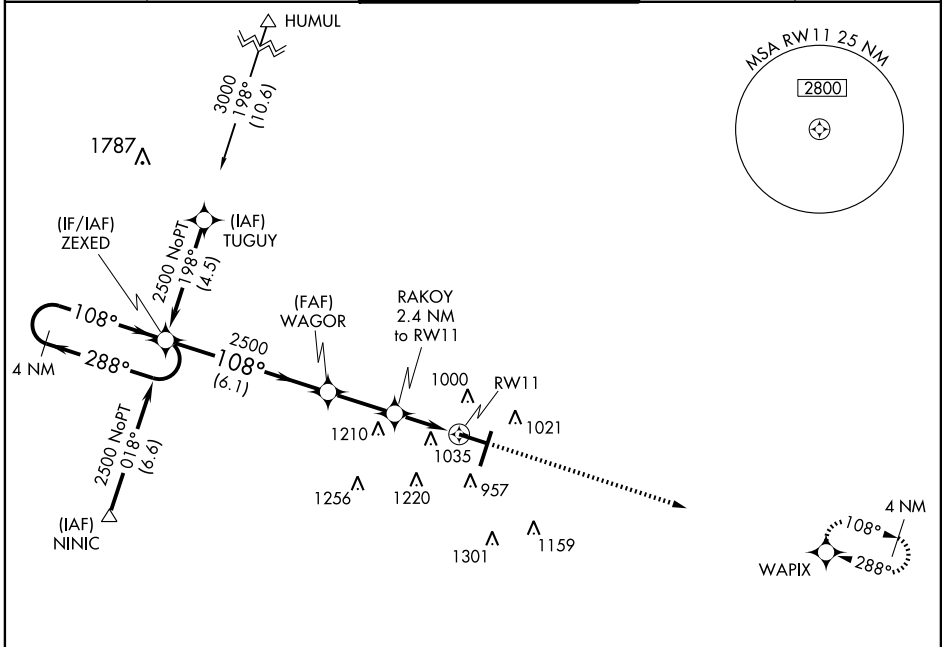
BLOOMINGTON/
NORMAL /CENTRAL IL RGNL ARPT AT BLOOMINGTON-NORMAL (BMI)

APP CRS 108°	Rwy Idg 6525
	TDZE 871
	Apt Elev 871

▼ When local altimeter setting not received, use Logan County altimeter setting and increase all MDAs 100 feet.
▲ DME/DME RNP-0.3 NA.

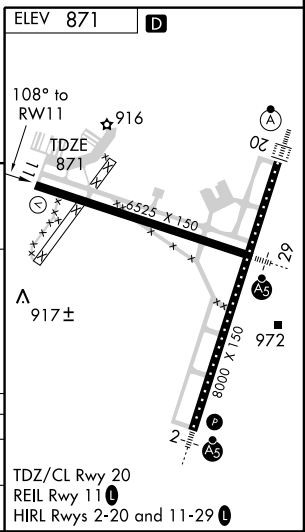
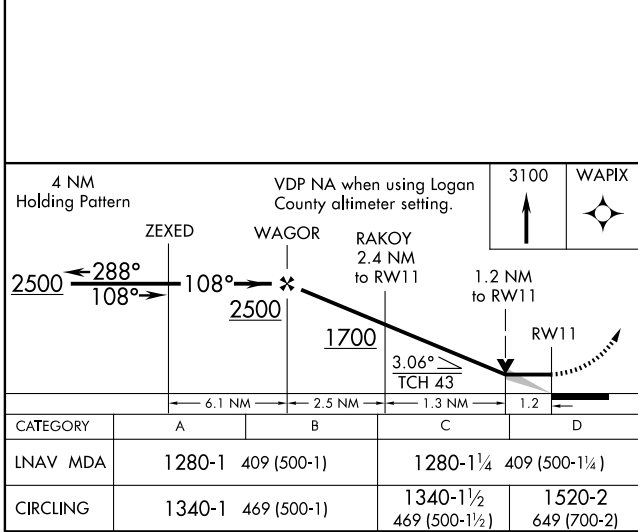
MISSED APPROACH: Climb to 3100 direct WAPIX and hold.

ATIS 135.35	PEORIA APP CON 128.725 256.9	BLOOMINGTON TOWER * 124.6 (CTAF) 0 269.575	GND CON 121.65	UNICOM 122.95
-----------------------	--	--	--------------------------	-------------------------



EC-3, 22 OCT 2009 to 19 NOV 2009

EC-3, 22 OCT 2009 to 19 NOV 2009



BLOOMINGTON/NORMAL, ILLINOIS
Orig 09295
40°29'N - 88°55'W

CENTRAL IL RGNL ARPT AT BLOOMINGTON-NORMAL (BMI)
BLOOMINGTON/NORMAL / **RNAV (GPS) RWY 11**

TDZ/CL Rwy 20
REIL Rwy 11
HIRL Rws 2-20 and 11-29