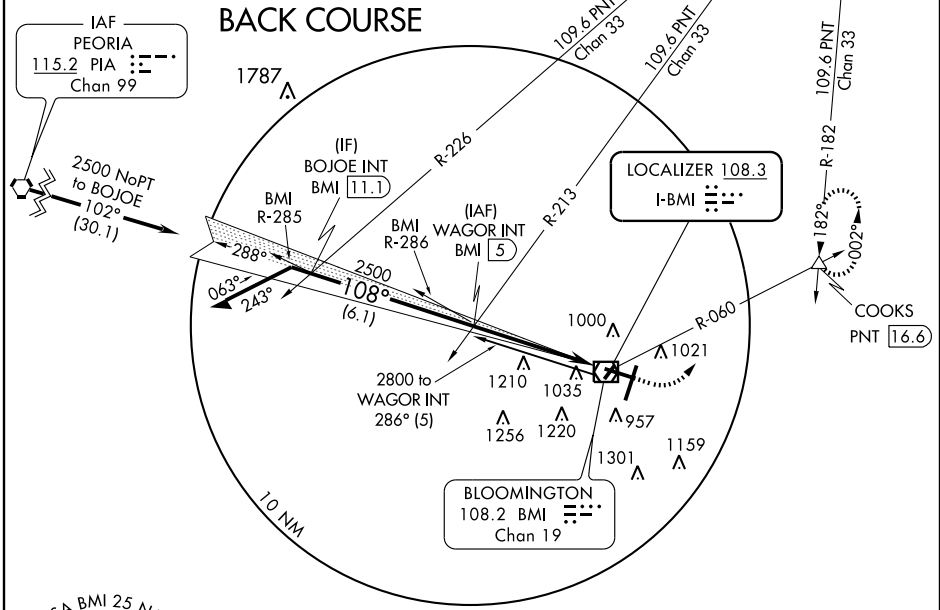


LOC I-BMI 108.3	APP CRS 108°	Rwy Idg TDZE Apt Elev	6525 871 871
---------------------------	------------------------	-----------------------------	---

BLOOMINGTON/NORMAL / CENTRAL IL RGNL ARPT AT BLOOMINGTON-NORMAL (BMI) **LOC BC RWY 11**

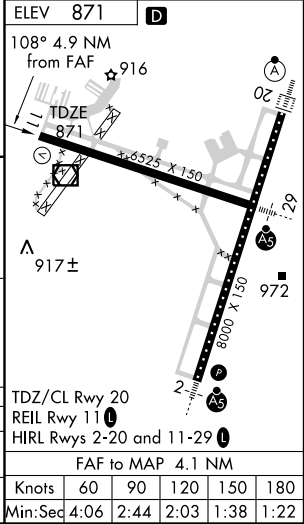
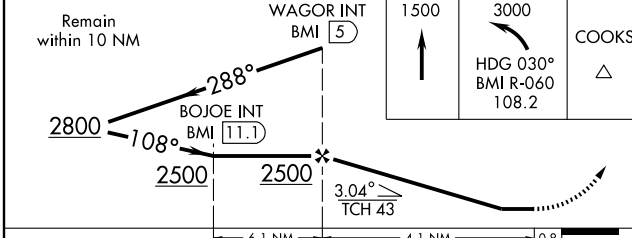
▼ When local altimeter setting not received, use Logan County altimeter setting and increase all MDAs 100 feet. **▲** MISSED APPROACH: Climb to 1500 then climbing left turn to 3000 via heading 030° and BMI VOR/DME R-060 to COOKS Int/PNT 16.6 DME and hold.

ATIS 135.35	PEORIA APP CON 128.725 256.9	BLOOMINGTON TOWER ★ 124.6 (CTAF) 269.575	GND CON 121.65	UNICOM 122.95
-----------------------	--	--	--------------------------	-------------------------



EC-3, 22 OCT 2009 to 19 NOV 2009

EC-3, 22 OCT 2009 to 19 NOV 2009



CATEGORY	A	B	C	D
S-11	1200-1	329 (400-1)		
CIRCLING	1340-1 469 (500-1)	1340-1½ 469 (500-1½)	1520-2 649 (700-2)	

Knots				
60	90	120	150	180
Min:Seq				
4:06	2:44	2:03	1:38	1:22