

BLOOMINGTON/NORMAL, ILLINOIS

AL-5058 (FAA)

LOC/DME I-TXN 111.9 Chan 56	APP CRS 018°	Rwy Idg TDZE Apt Elev	8000 867 872
---	------------------------	-----------------------------	---

BLOOMINGTON/
NORMAL /
CENTRAL IL RGNL ARPT AT BLOOMINGTON-NORMAL (BMI)

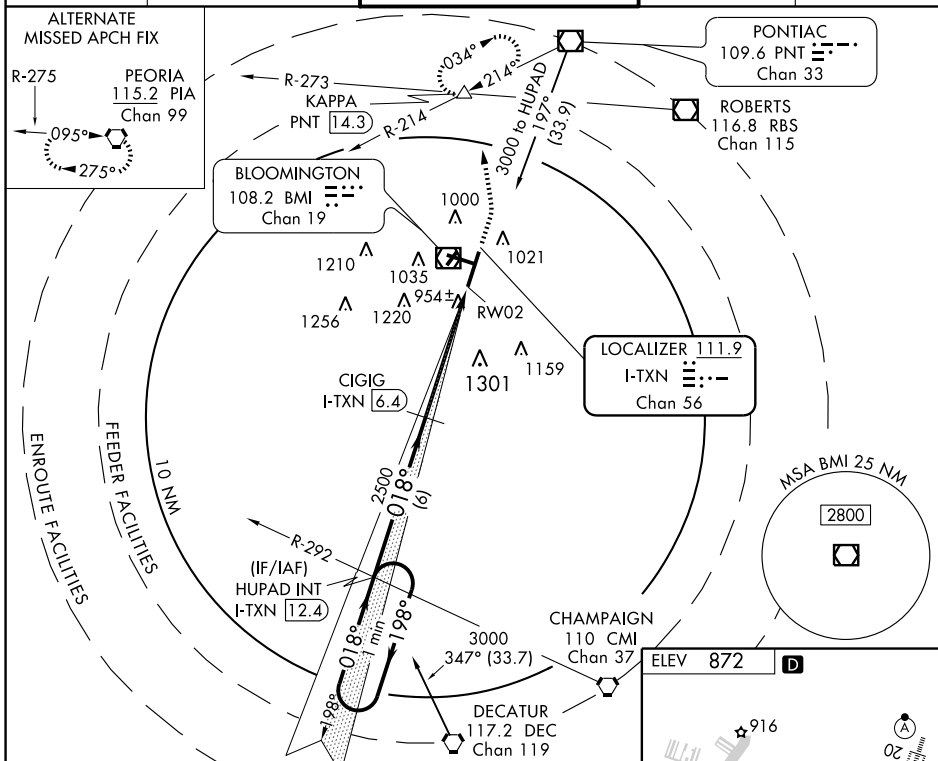
ILS or LOC/DME RWY 2

⚠ If local altimeter setting not received, use Greater Peoria Rgnl altimeter setting and increase all DAs/MDAs 120 feet. VDP NA when using Greater Peoria Rgnl altimeter setting.



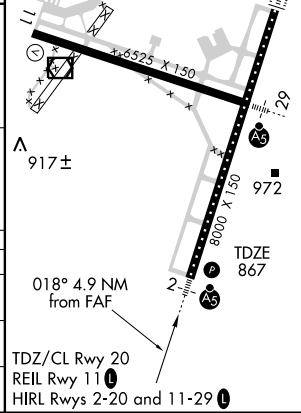
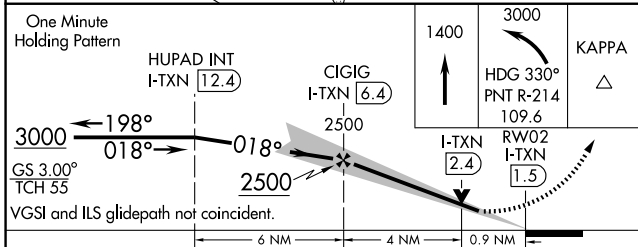
MISSED APPROACH: Climb to 1400, then climbing left turn to 3000 via heading 330° and PNT VOR/DME R-214 to KAPPA Int/PNT 14.3 DME and hold.

ATIS 135.35	PEORIA APP CON 128.725 256.9	BLOOMINGTON TOWER * 124.6 (CTAF) 269.575	GND CON 121.65	UNICOM 122.95
-----------------------	--	--	--------------------------	-------------------------



EC-3, 22 OCT 2009 to 19 NOV 2009

EC-3, 22 OCT 2009 to 19 NOV 2009



CATEGORY	A	B	C	D
S-ILS 2	1067- ³ / ₄		200 (200- ³ / ₄)	
S-LOC 2	1220-1	353 (400-1)	1220-1 ¹ / ₄ 353 (400-1 ¹ / ₄)	
CIRCLING	1340-1	468 (500-1)	1340-1 ¹ / ₂ 468 (500-1 ¹ / ₂)	1520-2 648 (700-2)

BLOOMINGTON/NORMAL, ILLINOIS

Orig 09295

40°29'N - 88°55'W

CENTRAL IL RGNL ARPT AT BLOOMINGTON-NORMAL (BMI)

BLOOMINGTON/NORMAL /

ILS or LOC/DME RWY 2